



**12 Carlinford, 26 Boscombe Cliff Road, Boscombe Spa,
Bournemouth, Dorset, BH5 1JW**



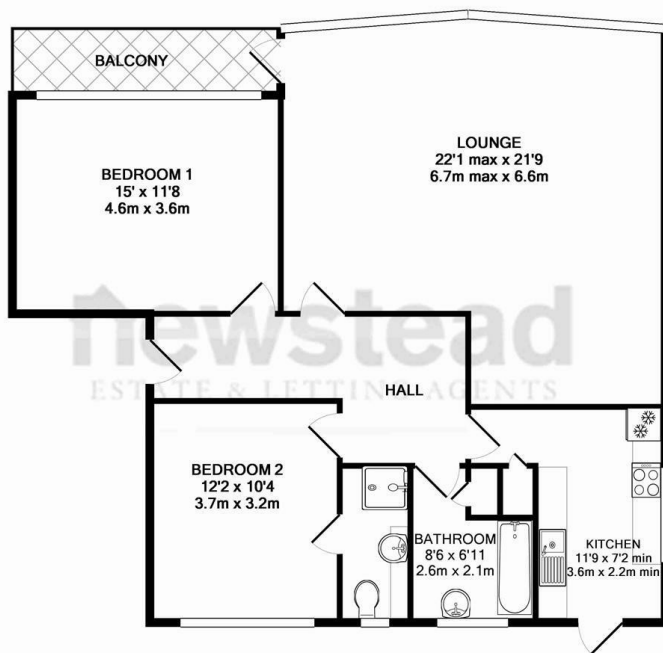
STUNNING PANORAMIC SEA VIEWS FROM THE NEEDLES TO OLD HARRY ROCKS - TOP FLOOR - LIFT SERVICE - BALCONY - LARGE LOUNGE - 2 BED - 2 BATH - SECURE UNDERGROUND PARKING

This top floor apartment offers spectacular views over Bournemouth Bay. The spacious south facing lounge has a panoramic view as well as access to the balcony. Its position offers security and seclusion in addition to what is arguably the best view in town.

Further accommodation consists of a modern kitchen with integrated fridge-freezer, oven and hob. There are two double bedrooms (one with en-suite shower room), both of which have fitted storage. The spacious entrance hall also offers scope to have a home office/workstation space.

The property is double glazed and has electric heating throughout.

A host of popular local restaurants and cafes are within walking distance with Bournemouth town centre approximately two miles distant. The development offers the enormous benefit of having no road running in front hence giving enjoyment of a tranquil setting with a balcony free from the sight and sound of passing traffic. The property further benefits from secure underground parking and is offered for sale with no forward chain. We believe the apartment has to be seen to be appreciated.



TOTAL APPROX. FLOOR AREA 1023 SQ.FT. (95.0 SQ.M.)

Whilst every attempt has been made to ensure the accuracy of the floor plan contained here, measurements of doors, windows, rooms and any other items are approximate and no responsibility is taken for any error, omission, or mis-statement. This plan is for illustrative purposes only and should be used as such by any prospective purchaser. The services, systems and appliances shown have not been tested and no guarantee as to their operability or efficiency can be given.
Made with Metropix ©2015

You may download, store and use the material for your own personal use and research. You may not republish, retransmit, redistribute or otherwise make the material available to any party or make the same available on any website, online service or bulletin board of your own or of any other party or make the same available in hard copy or in any other media without the website owner's express prior wr

Newstead Estate & Lettings Agents Ltd
122-124 Castle Lane West, Bournemouth, Dorset, BH9 3JU
Tel: 01202 430 108
Email: info@newsteadproperty.co.uk
www.newsteadproperty.co.uk

newstead
ESTATE & LETTING AGENTS