



## PARK ROAD, REGENT'S PARK, NW8

**Price**  
**£995 per week**

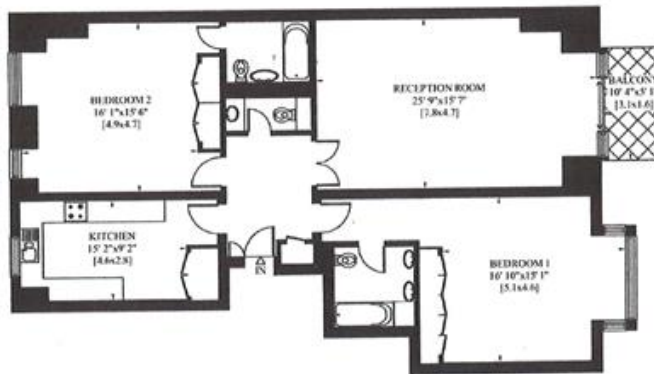
Lovely flat, recently refurbished to an excellent standard. Spacious and bright two bedroom apartment with wooden floors throughout, balcony and underground parking space, on the third floor of this well maintained purpose built block. The flat has been recently refurbished to an excellent standard and enjoys lovely views over Regent's Park.

### Details

- 2 bedrooms
- 2 bathrooms
- guest cloakroom
- reception room
- kitchen
- balcony
- lift
- underground parking

CROWN COURT  
PARK ROAD  
LONDON NW1

Gross Internal Area: 131 Sq. metres  
1410 Sq. feet

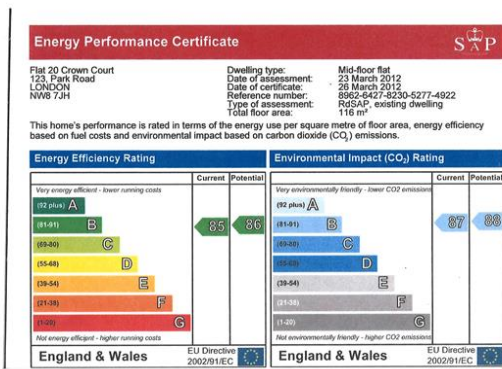


THIRD FLOOR

## Terms and Conditions

Available: Available 30/09/2015 For Long Let  
Price: £995 per week

## EPC Information



**SUBJECT TO CONTRACT**

**VIEWING STRICTLY BY APPOINTMENT**