

## PORCHESTER SQUARE, LONDON, W2.

**Price**  
**£530 per week**

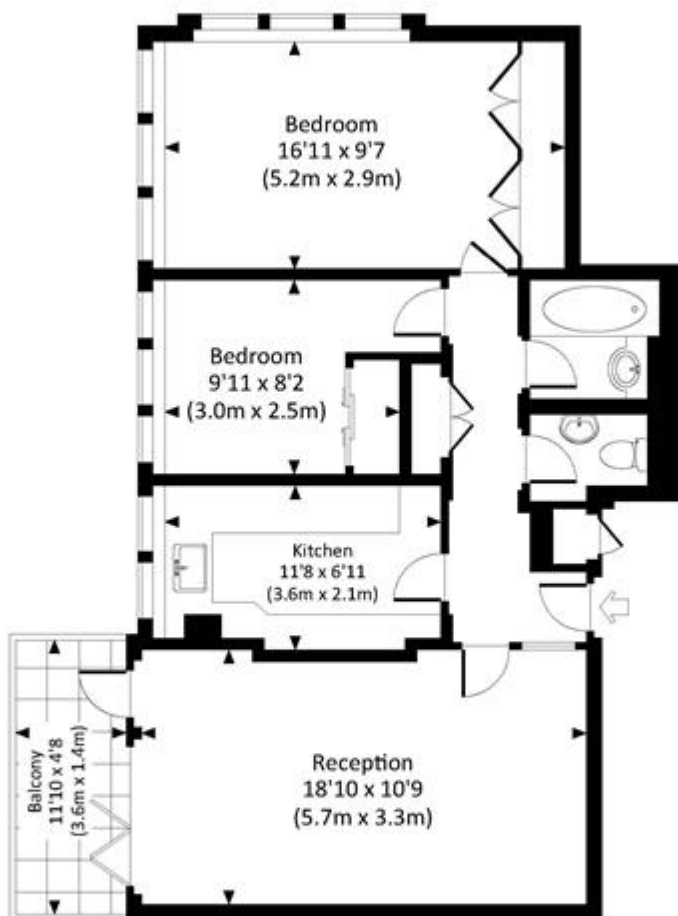
Attractive two bedroom apartment on the fourth floor of this well maintained purpose built block. Attractive two bedroom apartment on the fourth floor of this well maintained purpose built block with a balcony and portorage. The property is located at the top end of Queensway close to Whiteley,s shopping centre.

### Details

- 2 bedrooms
- bathroom
- reception room
- kitchen
- balcony

## THE COLONNADES, W2

Approx. gross internal area  
695 Sq.Ft. / 64.6 Sq.M.



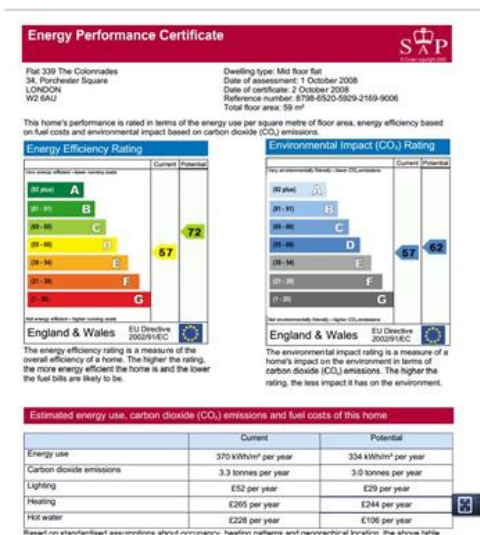
FOURTH FLOOR

 All measurements are approximate and for illustrative purposes only as defined by the RICS Code of Measuring Practice © 2018. Drawing: Simon Design www.simon-design.com 020 7610 8822

## Terms and Conditions

Available: Available 08/09/2015 For Long Let  
Price: £530 per week

## EPC Information



**SUBJECT TO CONTRACT**

**VIEWING STRICTLY BY APPOINTMENT**