



## DEVONSHIRE STREET, MARYLEBONE, W1

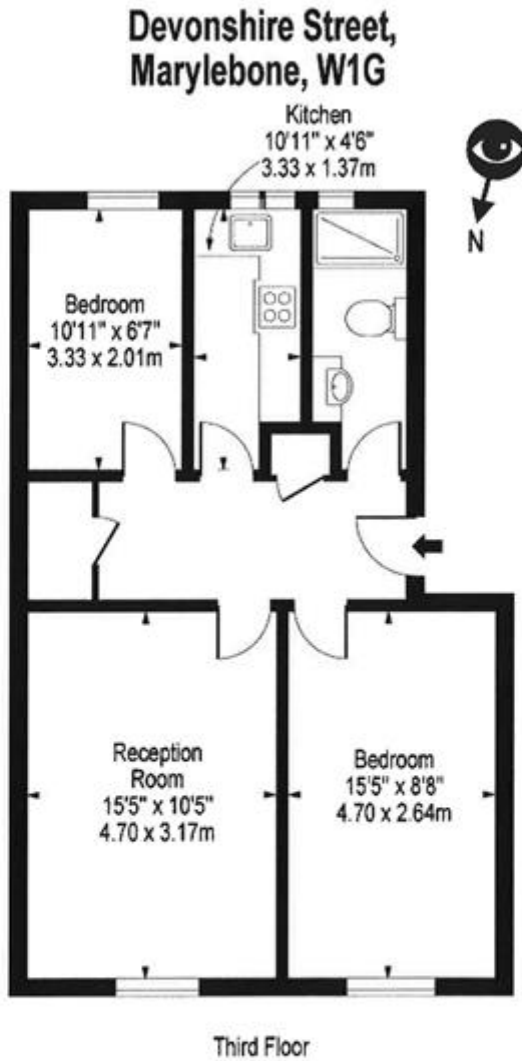
**Price**  
**£650 per week**

Sweet flat in a fantastic location. Lovely two bedroom apartment with wooden floors, on the third floor of this classic period building with a lift. The property is located in the heart of Marylebone close to Regent's Park and all shopping and transport amenities.

### Details

2 bedrooms  
bathroom  
reception room  
kitchen  
lift





**Approx Gross Internal Area 578 Sq Ft - 53.70 Sq M**

For Illustration Purposes Only - Not To Scale

Floor Plan by [www.bpmmediagroup.com](http://www.bpmmediagroup.com)

Ref. No. P50585

## Terms and Conditions

Available: Available Now For Long Let  
Price: £650 per week

**SUBJECT TO CONTRACT**

**VIEWING STRICTLY BY APPOINTMENT**