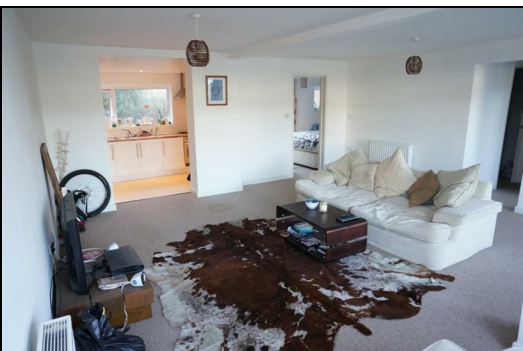




**23 Portman Crescent, Boscombe Manor, Bournemouth, Dorset,
BH5 2ER**



BE QUICK! SPACIOUS GROUND FLOOR FLAT WITH GARDEN NEXT TO THE SEAFRONT - This flat ticks all the boxes! Located just a stone's throw from Fisherman's Walk, the property sits in an ideal position for anyone wanting a home by the beach.

As well as having its own private garden at the rear, the property comes with ample parking on the front forecourt for two cars.

Inside there is a lovely bright and spacious lounge (7.0m x 5.4m!) as well as a modern kitchen with appliances included.

There are also two good size double bedrooms and a contemporary styled bathroom with separate shower and 'Jack & Jill' doors from each of the bedrooms.

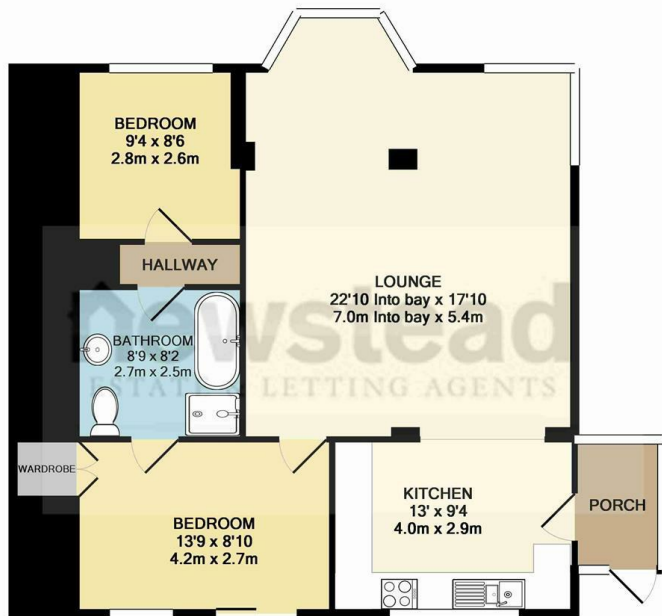
The property also comes with modern gas central heating and UPVC double glazing.

PETS CONSIDERED

FURNISHED

AVAILABLE NOW! - Don't delay! First to see will go for it.

Contact Newstead for all viewings - 01202 430108



TOTAL APPROX. FLOOR AREA 835 SQ.FT. (77.6 SQ.M.)

Whilst every attempt has been made to ensure the accuracy of the floor plan contained here, measurements of doors, windows, rooms and any other items are approximate and no responsibility is taken for any error, omission, or mis-statement. This plan is for illustrative purposes only and should be used as such by any prospective purchaser. The services, systems and appliances shown have not been tested and no guarantee as to their operability or efficiency can be given.

Made with Metropix ©2013

You may download, store and use the material for your own personal use and research. You may not republish, retransmit, redistribute or otherwise make the material available to any party or make the same available on any website, online service or bulletin board of your own or of any other party or make the same available in hard copy or in any other media without the website owner's express prior wr

Newstead Estate & Lettings Agents Ltd
 122-124 Castle Lane West, Bournemouth, Dorset, BH9 3JU
 Tel: 01202 430 108
 Email: info@newsteadproperty.co.uk
www.newsteadproperty.co.uk

newstead
 ESTATE & LETTING AGENTS