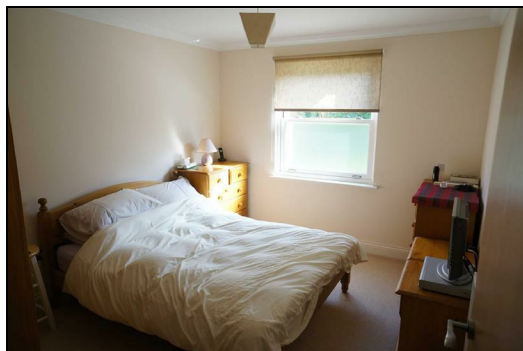
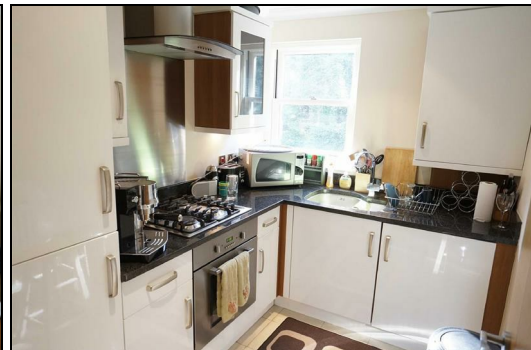




**Flat 6 Craven Grange, 17 Bodorgan Road, Meyrick Park,
Bournemouth, Dorset, BH2 6NQ**



**MODERN 2 BED FLAT IN CHARACTER STYLE BUILDING - IDEAL LOCATION
CLOSE TO TOWN CENTRE - PARKING - GATED ENTRANCE - HIGH QUALITY
FINISH**

Craven Grange is a Victorian building that has been sympathetically renovated so the building maintains all of its charm, whilst the apartments benefit from the best of modern conveniences. This first floor two bedroom flat has a lounge, modern kitchen with granite work surfaces and integrated appliances. There are two bedrooms as well as a modern bathroom with contemporary suite and shower over bath.

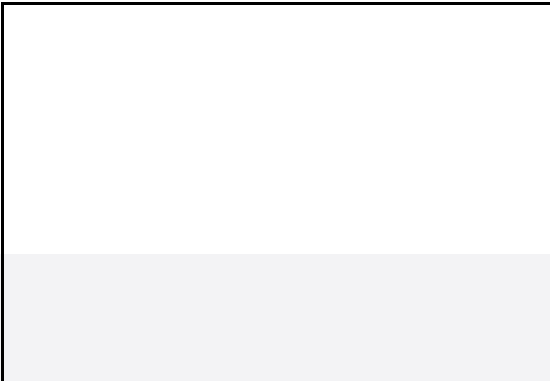
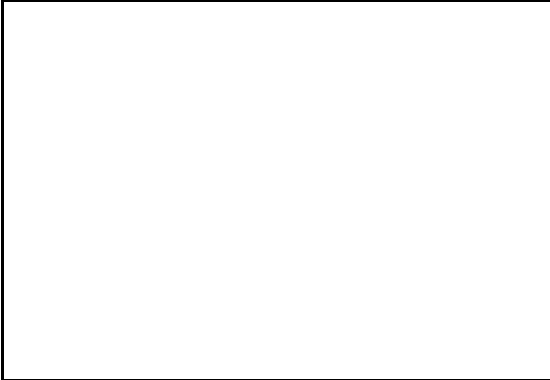
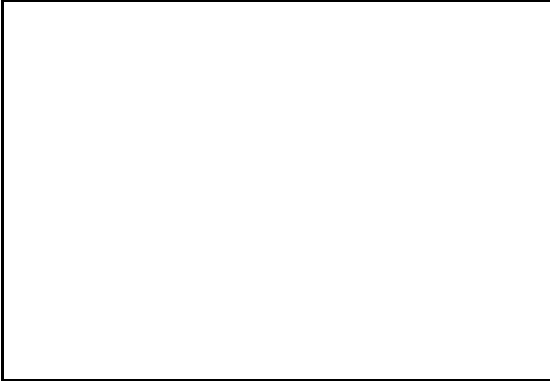
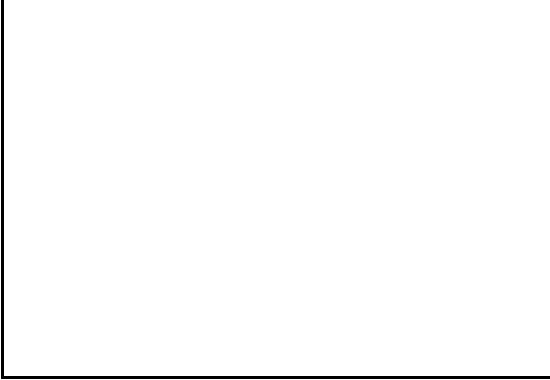
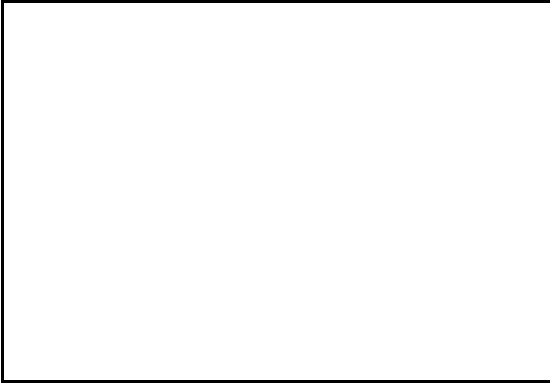
The property comes with full gas central heating via a combi boiler. Outside there is one allocated parking space in the block paved and gated parking area. This sought after Meyrick Park location is ideal for anyone needing good access to Bournemouth Town Centre and the Wessex Way.

Unfurnished

Available after 20th June 2016

No Pets

No DSS



You may download, store and use the material for your own personal use and research. You may not republish, retransmit, redistribute or otherwise make the material available to any party or make the same available on any website, online service or bulletin board of your own or of any other party or make the same available in hard copy or in any other media without the website owner's express prior written consent.