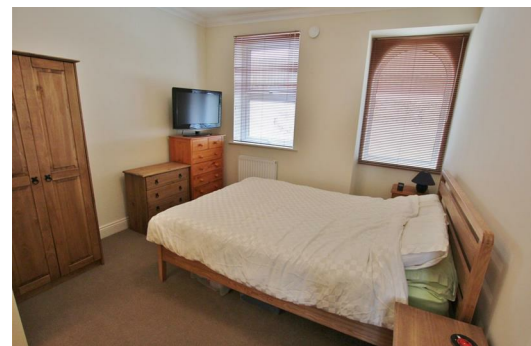




**2 Woodford Court, 19 Studland Road, Bournemouth, BH4 8HH**

**£1,050 Per Calendar Month**

ALUM CHINE LOCATION - 2 DOUBLE BEDROOMS - OFF ROAD PARKING - COURTYARD GARDEN -  
AVAILABLE 20TH JULY 2016



FANTASTIC LOCATION WALKING DISTANCE TO ALUM CHINE. This 2 double bedroom ground floor flat is in a prime location close to Alum Chine beach and a short distance to Westbourne with its boutique shops, cafes and restaurants. The property comprises of a bright and airy lounge with double doors leading onto the courtyard garden. From the lounge leads into the kitchen with integrated fridge freezer, washer/dryer and dishwasher with a small breakfast bar area for seating. There is a good size main bathroom with bath and hair washing shower attachment. The main double bedroom leads through to the en-suite shower room. The second bedroom is also a double room.

The property also benefits from one allocated off road parking space, gas central heating and double glazing.

Available 20th July 2016.

No DSS.

No pets.

Bournemouth Borough Council Tax Band D

