



Offers In Excess Of £310,000 Share of Freehold

For Sale

Rental Yield: 4.65%

Blenheim Crescent, South Croydon



www.martincolondon.com

MARTIN&CO

0208 688 8565

croydon@martinco.com

145 Brighton Road, South Croydon, Surrey, CR2 6EF

Accuracy: Whilst we endeavour to make our sales details accurate and reliable, if there is any point which is of particular importance to you, please contact the office and we will be pleased to check the information. Do so, particularly if contemplating travelling some distance to view the property. Sonic / Laser Tape: All measurements have been taken using a sonic / laser tape measure and therefore, may be subject to a small margin of error. Services Not tested: The mention of any appliances and/or services within these Sales Particulars does not imply they are in full and efficient working order. All Measurements: All Measurements are Approximate. Mortgage & Financial Advice: The Martin & Co mortgage service is provided by London & Country Mortgages the UK's largest Independent Fee-Free mortgage broker of Beazer House, Lower Bristol Road, Bath, BA2 3BA. Authorised and regulated by the Financial Conduct Authority. Their FCA number is 143002. YOUR HOME IS AT RISK IF YOU DO NOT KEEP UP REPAYMENTS ON A MORTGAGE OR OTHER LOANS SECURED ON IT. Full written quotation available on request. A suitable life policy may be required. Loans subject to status. Minimum age 18.

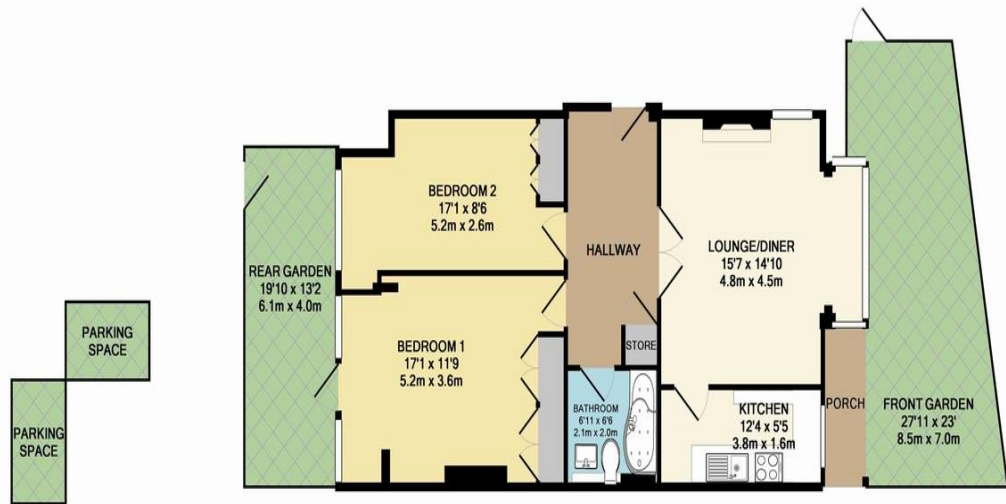
For Sale

Offers In Excess Of **£310,000** Share of Freehold

2 Bedroom Ground Floor Flat

SPACIOUS 2 DOUBLE BEDROOM GROUND FLOOR FLAT with PRIVATE FRONT & REAR GARDENS located in a leafy residential area of South Croydon. The apartment benefits from a large reception room, separate kitchen, tall ceilings, OFF STREET PARKING and a NEWLY REFURBISHED BATHROOM. Within easy reach of Purley Oaks and Sanderstead Stations. 999 year lease plus a SHARE OF THE FREEHOLD, this one IS NOT TO BE MISSED. Ideal Buy To Let currently rented at £1,200 pcm.

- GROUND FLOOR
- HIGHLY SPACIOUS
- 2 DOUBLE BEDROOMS
- PRIVATE GARDENS
- NEW BATHROOM SUITE
- SEPARATE KITCHEN
- PRIVATE PARKING
- LEASEHOLD + SHARE FREEHOLD
- EPC Rating:



BLENHEIM CRESCENT
TOTAL APPROX. FLOOR AREA 753 SQ.FT. (70.0 SQ.M.)
Whilst every attempt has been made to ensure the accuracy of the floor plan contained here, measurements of doors, windows, rooms and any other items are approximate and no responsibility is taken for any error, omission, or mis-statement. This plan is for illustrative purposes only and should be used as such by any prospective purchaser. The services, systems and appliances shown have not been tested and no guarantee is given as to their operability or efficiency can be given.
Made with Metropix ©2015



www.martincolondon.com

MARTIN & CO

0208 688 8565

croydon@martinco.com

145 Brighton Road, South Croydon, Surrey, CR2 6EF

Accuracy: Whilst we endeavour to make our sales details accurate and reliable, if there is any point which is of particular importance to you, please contact the office and we will be pleased to check the information. Do so, particularly if contemplating travelling some distance to view the property. Sonic / Laser Tape: All measurements have been taken using a sonic / laser tape measure and therefore, may be subject to a small margin of error. Services Not tested: The mention of any appliances and/or services within these Sales Particulars does not imply they are in full and efficient working order. All Measurements: All Measurements are Approximate: Mortgage & Financial Advice: The Martin & Co mortgage service is provided by London & Country Mortgages the UK's largest Independent Fee-Free mortgage broker of Beazer House, Lower Bristol Road, Bath, BA2 3BA. Authorised and regulated by the Financial Conduct Authority. Their FCA number is 143002. YOUR HOME IS AT RISK IF YOU DO NOT KEEP UP REPAYMENTS ON A MORTGAGE OR OTHER LOANS SECURED ON IT. Full written quotation available on request. A suitable life policy may be required. Loans subject to status. Minimum age 18.