



Cheshunt: Tel: 01992 621116

[www.jrpropertyservices.co.uk](http://www.jrpropertyservices.co.uk)

Cuffley: Tel: 01707 872111



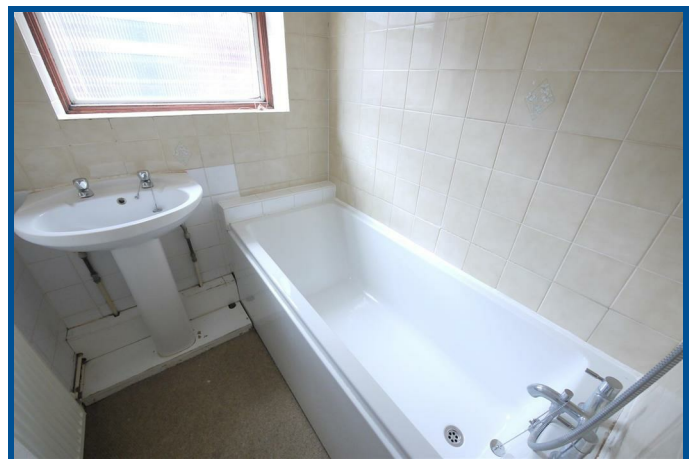
## MILLCREST ROAD GOFFS OAK

Standing on a generous sized plot with some 250' west facing rear garden, a semi detached bungalow with gas heating and double glazing. The bungalow is situated in this popular residential road just off Robinson Avenue within easy reach of a local parade of shops. Cuffley with its main line station is also close by. The bungalow is being offered for sale with No Upward Chain and offers the following accommodation which really must be inspected to be fully appreciated.

- NO UPWARD CHAIN
- LIVING ROOM
- BATHROOM
- GAS HEATING
- KITCHEN/BREAKFAST ROOM
- GARAGE WITH SHARED FRONTAL DRIVE
- DOUBLE GLAZING
- 2 BEDROOMS
- ABOUT 250' WEST FACING REAR GARDEN

### £439,950 FREEHOLD

**VIEWING RECOMMENDED!**



Cuffley: 24 Station Road, Cuffley, Herts EN6 4HT  
email: [cuffley@jrpropertyservices.co.uk](mailto:cuffley@jrpropertyservices.co.uk)

Cheshunt: 56 Turners Hill, Cheshunt, Herts EN8 8LQ  
email: [cheshunt@jrpropertyservices.co.uk](mailto:cheshunt@jrpropertyservices.co.uk)

All photographs shown are for illustration only and may show items that are not for sale or included in the sale of the property. Please note that all measurements have a 5% tolerance level. 'None of the statements contained in these particulars as to this property are to be relied on as statements of representation of fact.'



**ENTRANCE LOBBY:-**

Part glazed door to:-

**RECEPTION HALLWAY:-**

Radiator. Coving to the ceiling. Built in airing cupboard and storage cupboard.

**LIVING ROOM:-**

16'5 x 10

Double radiator. Coving to the ceiling. Double glazed patio doors to the rear garden



**KITCHEN/BREAKFAST ROOM:-**

12'8 x 11'2

Stainless steel bowl and a quarter sink unit with mixer tap and cupboards under. Range of matching floor and wall storage cupboards with ample working surfaces. Double glazed window to the garden. 'Potterton' wall mounted gas fired boiler. 'Bush' oven and ceramic hob with stainless canopy and extractor fan over. Double radiator. Plumbing for washing machine. Georgian styled double glazed door to the side.



**BEDROOM 1:-**

12'11 x 7'7

Double glazed windows to the front. Radiator. Coving to the ceiling.



**BEDROOM 2:-**

10'10 x 7'7

Double glazed window to the front. Radiator. Coving to the ceiling



**TILED BATHROOM:-**

White suite comprising enclosed bath with mixer tap and hand held shower attachment. Pedestal wash hand basin. Radiator. Opaque double glazed window to the side.



**SEPARATE TOILET:-**

Half tiled walls. Low flush wc suite. Opaque double glazed window to the side.



**DETACHED GARAGE:-**

With shared frontal drive.

**THE GARDENS:-**

About 250' rear garden with paved terrace leading to lawns. Selection of shrubs



