





Jdm are delighted to offer to the market this fully refurbished, three bedroom detached house in Petts Wood East. The property has been renovated from top to bottom and offers a wealth of accommodation.

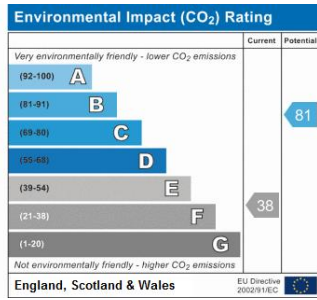
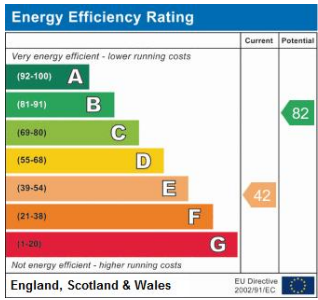
Petts Wood mainline station is ideally situated, offering access to an array of London termini including London Bridge, Charing Cross, Waterloo East and Charing Cross. The recently ofsted rated Crofton Primary school is also located locally.

The accommodation comprises cloakroom, lounge to front, open plan, modern fitted kitchen diner overlooking the garden and utility room to the ground floor. To the first floor are three well proportioned bedrooms and the impressive family bathroom with separate shower.

To the rear is the mainly laid to lawn garden with a substantial patio area. To the front is off street parking.



Internal viewing is essential to fully appreciate the quality of this detached home.



Please refer to

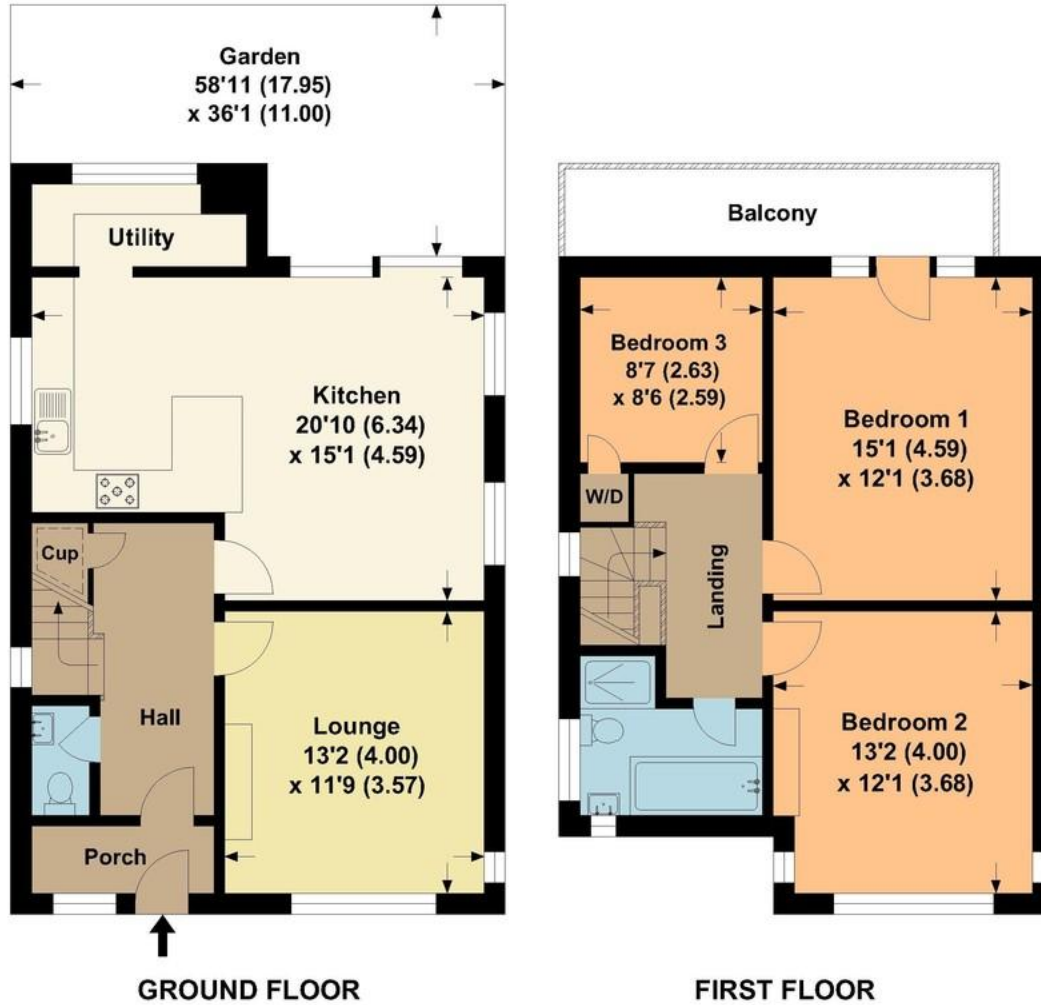
www.jdmestateagents.com

to view our full area guides



Tudor Way

APPROX. GROSS INTERNAL FLOOR AREA 1219.52 SQFT / 113.29 SQM.



This is for guidance only, not to scale and must not be relied upon as a statement of fact.
Attention is drawn to the notice on these particulars.

