



3 Bedroomed End Terrace

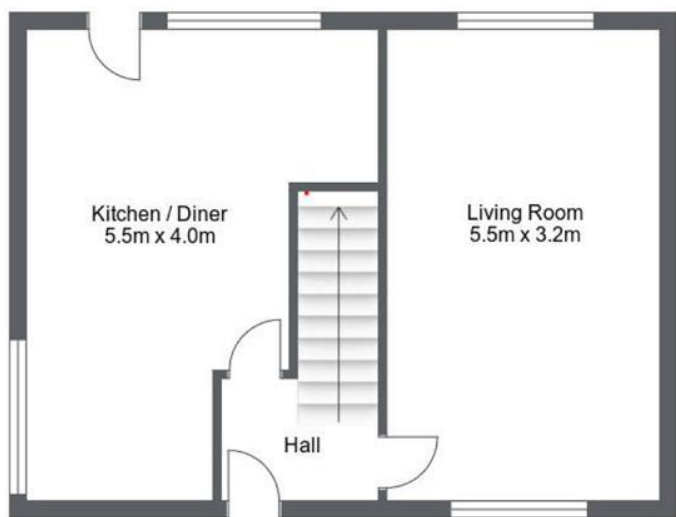
£210,000

1 Wentworth Crescent

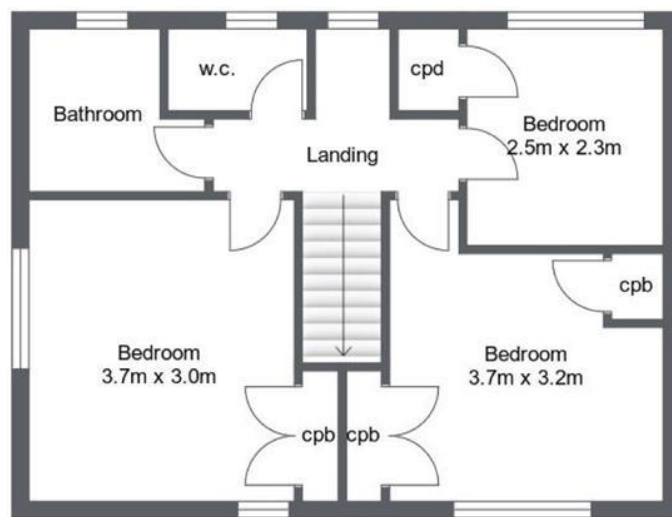
Harrogate, HG2 7LB



Email: talk@alexandergibson.co.uk
Telephone: 01423 563077
5 Raglan Street,
Princes Square,
Harrogate, HG1 1LE



Ground Floor



First Floor

Alexander Gibson Estate Agents ©2014

Occupying a significantly-sized corner plot this family property has excellent gardens to front, side and rear, offering potential for extension to create a superb modern home.

Located close to local shops and Starbeck railway station, this property is sure to appeal to a wide range of buyers, and has a double garage and off-street parking for several cars.

Upon entering the property the entrance hall leads off in three directions, left to the spacious kitchen diner, right to the living room, and up the stairs to the remainder of the property. Both the kitchen diner and the living room are stretched across the full depth of the home, creating a feeling of space, divided by way of the central staircase.

On the first floor are two good-sized double bedrooms and a third slightly smaller one complete with built-in storage. The bathroom and separate w.c. have been recently redone with Travertine tiling.

This is a lovely family home in a good location, with lots of potential for expansion.

Surroundings

1 Wentworth Crescent is located in the Starbeck area of Harrogate, well-served by an array of local shops, a train station with links to Harrogate, York, Leeds and beyond, a nursery and primary school, several service businesses, food outlets, a public house and sporting facilities.

Services

The property is connected to mains electricity, gas, water and drainage. Fibre broadband is available in the area with speeds of up to 152Mb.

Directions

From Harrogate town centre follow Station Parade to the traffic lights and turn left onto the A59 York Place heading for Knaresborough. Take the second exit at the 'Empress' roundabout and continue on the A59. On crossing the railway crossing at Starbeck take the second right turn at the Co-operative shop onto Forest Avenue. Turn left onto Wentworth Crescent where number 1 is on the left hand side marked by our "For Sale" board.

Energy Efficiency Rating: C

Tenure: Freehold

Council Tax Banding: B

Alexander Gibson Estate Agents wish to advise prospective purchasers that we have not checked the services or appliances. The sales particulars have been prepared as a guide only; any floor-plan or map is for illustrative purposes only. Alexander Gibson Estate Agents, for themselves and for the vendors or lessors of this property whose agents they are give notice that: the particulars have been produced in good faith; do not constitute any part of a contract; no person in the employment of Alexander Gibson Estate Agents has any authority to make or give any representation of warranty in relation to this property.