







GUIDE PRICE £375,000 - £400,000

A three bedroom end of terrace house that will truly amaze you from the minute you walk through the front door.

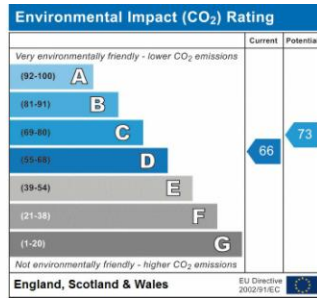
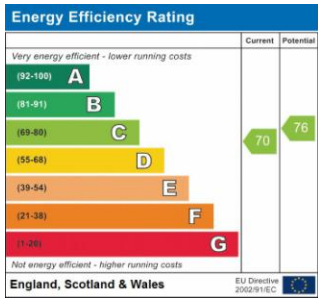
This property has been remodelled to provide a contemporary and spacious open plan ground floor living area consisting of a kitchen, dining area and living space. The kitchen is fitted with a full range of wall and base units and includes an integrated fridge-freezer, dishwasher, oven, hob and extractor. Special attention has been paid to the design to incorporate plentiful storage, modern sleek radiators to maximise wall space, wooden flooring, a large walk in storage 'room' and a downstairs cloakroom.

To the first floor are two double bedrooms with wardrobes, and a good sized single bedroom. The family bathroom is crisp and modern and is fitted with a bath with shower over, sink & WC. There is also a separate shower room and a large airing cupboard which is also used as a laundry space.



The rear garden measuring 35'7 consists of a decked area, lawn with flower beds and a storage shed. A bonus to this end of terrace is the spacious side garden area providing a neat and discreet space to store bins, bikes & tools etc.

Early viewings are highly recommended.



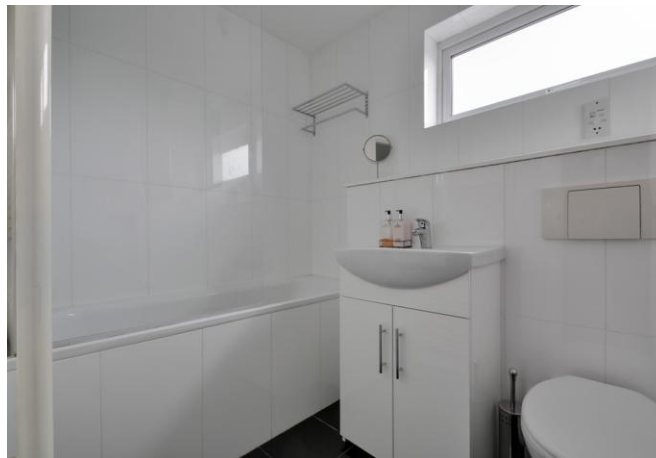
Please refer to

---

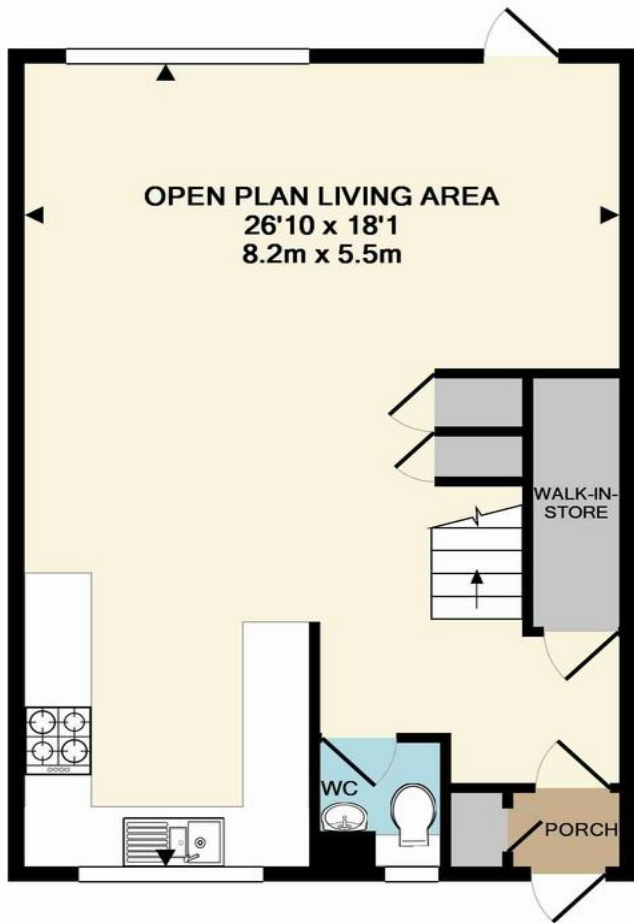
[www.jdmestateagents.com](http://www.jdmestateagents.com)

---

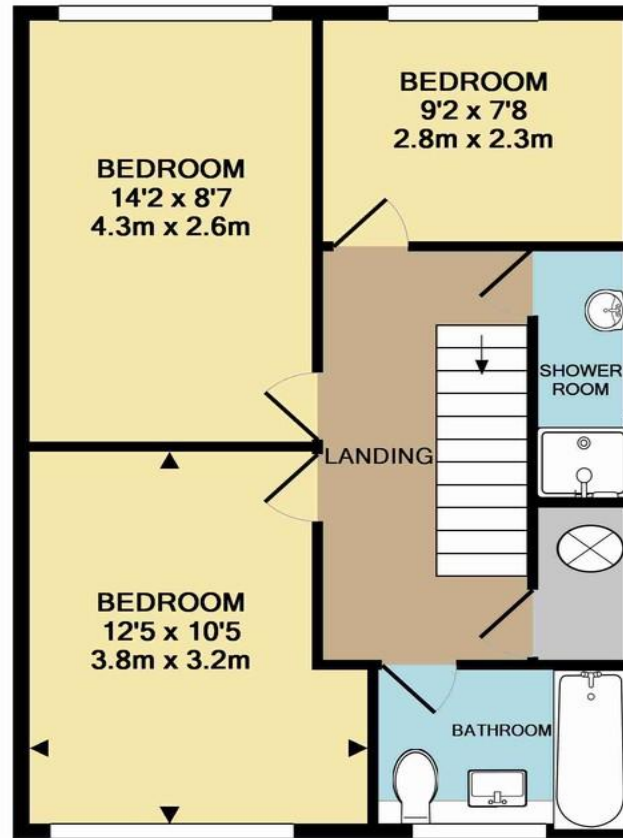
to view our full area guides







GROUND FLOOR  
APPROX. FLOOR  
AREA 483 SQ.FT.  
(44.8 SQ.M.)



1ST FLOOR  
APPROX. FLOOR  
AREA 485 SQ.FT.  
(45.0 SQ.M.)

TOTAL APPROX. FLOOR AREA 967 SQ.FT. (89.9 SQ.M.)

Whilst every attempt has been made to ensure the accuracy of the floor plan contained here, measurements of doors, windows, rooms and any other items are approximate and no responsibility is taken for any error, omission, or mis-statement. This plan is for illustrative purposes only and should be used as such by any prospective purchaser. The services, systems and appliances shown have not been tested and no guarantee as to their operability or efficiency can be given  
Made with Metropix ©2016

