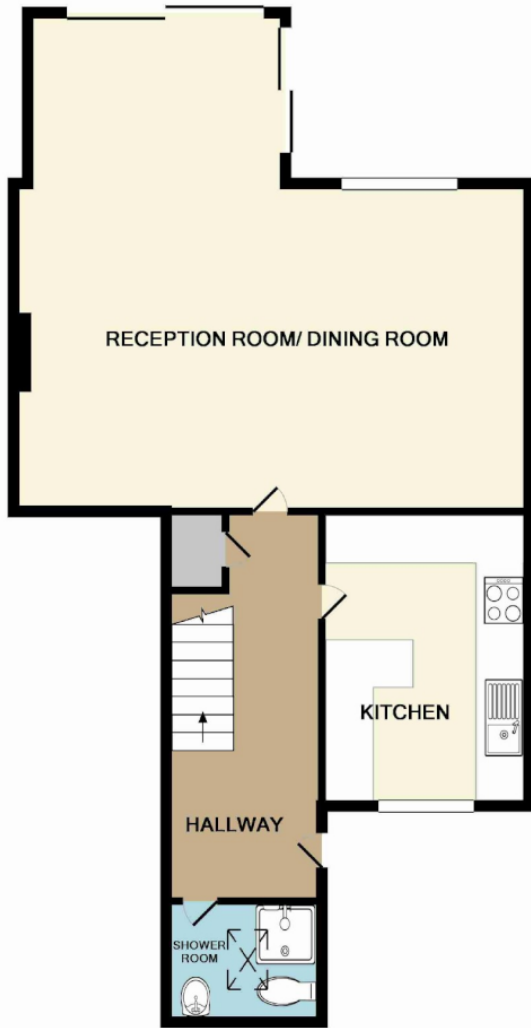




Gleneagles Close | Orpington

Full Description 3 bed end of terrace house in quiet close on the popular Crofton Estate, close to Crofton Primary School, walking distance to Darrick Woods and Newstead Woods Schools, Orpington and Petts Wood Stations. Comprising large living room with patio doors to rear garden, modern kitchen with appliances, downstairs shower room/wc, two double bedrooms & a 3rd smaller double bedroom, all with wardrobes. Newly fitted bathroom, double glazed and gas centrally heated. Attached single garage and driveway parking for two cars. Offered FURNISHED. Available early March. Council Tax Band E. EPC Rating E



GROUND FLOOR



1ST FLOOR

TOTAL APPROX. FLOOR AREA 1119 SQ.FT. (104.0 SQ.M.)

Whilst every attempt has been made to ensure the accuracy of the floor plan contained here, measurements of doors, windows, rooms and any other items are approximate and no responsibility is taken for any error, omission, or mis-statement. This plan is for illustrative purposes only and should be used as such by any prospective purchaser. The services, systems and appliances shown have not been tested and no guarantee as to their operability or efficiency can be given
Made with Metropix ©2013

Contact Details

36 Station Square
Petts Wood
Orpington
Kent
BR5 1NA

www.jdmestateagents.com

lettings@jdmlettings.com

01689 838040

Please refer to our website to see our full Area Guides.



Energy Efficiency Rating		
	Current	Potential
<i>Very energy efficient - lower running costs</i>		
(92-100) A		
(81-91) B		85
(69-80) C		
(55-68) D		
(39-54) E	50	
(21-38) F		
(1-20) G		
<i>Not energy efficient - higher running costs</i>		
England & Wales	EU Directive 2002/91/EC	

IMPORTANT NOTICE: Every effort has been made to ensure the accuracy of these details however they form no part of any contract and are issued without responsibility on the part of the agents or landlord. Any intending tenant should satisfy themselves by inspection as to the correctness of each statement. Photographs may show only certain parts and aspects of the property at the time when the photographs were taken. We recommend that all information provided is verified by yourself on inspection.