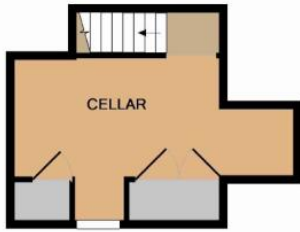




## Mill Place | Chislehurst | £1,700 pcm

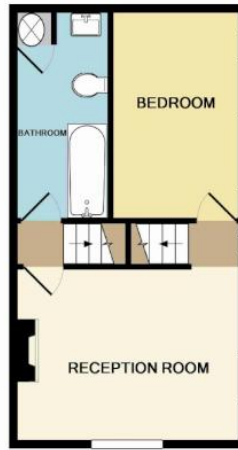
3 bed character period property with parking in lovely historic surroundings adjacent to the Common and a short walk to Chislehurst station. This end of terrace town house comprises dining room and modern kitchen with appliances to ground floor, lounge, small double bedroom and bathroom to 1st floor, and 2 double bedrooms to 2nd floor. Cellar providing useful storage, gas central heating, partial double glazing, and off street parking. Offered unfurnished. Available now. Council tax Band E. EPC Rating E



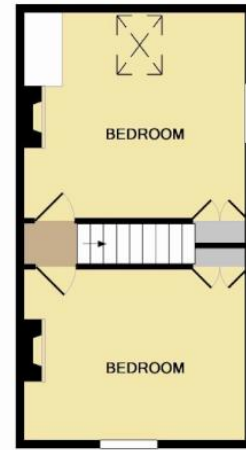
BASEMENT LEVEL  
APPROX. FLOOR  
AREA 150 SQ.FT.  
(14.0 SQ.M.)



GROUND FLOOR  
APPROX. FLOOR  
AREA 309 SQ.FT.  
(28.7 SQ.M.)



1ST FLOOR  
APPROX. FLOOR  
AREA 307 SQ.FT.  
(28.5 SQ.M.)



2ND FLOOR  
APPROX. FLOOR  
AREA 309 SQ.FT.  
(28.7 SQ.M.)

TOTAL APPROX. FLOOR AREA 1075 SQ.FT. (99.9 SQ.M.)

Whilst every attempt has been made to ensure the accuracy of the floor plan contained here, measurements of doors, windows, rooms and any other items are approximate and no responsibility is taken for any error, omission, or mis-statement. This plan is for illustrative purposes only and should be used as such by any prospective purchaser. The services, systems and appliances shown have not been tested and no guarantee as to their operability or efficiency can be given.  
Made with Metropix ©2015

## Contact Details

36 Station Square  
Petts Wood  
Orpington  
Kent  
BR5 1NA

[www.jdmestateagents.com](http://www.jdmestateagents.com)

[lettings@jdmlettings.com](mailto:lettings@jdmlettings.com)

01689 838040

Please refer to our website to see our full Area Guides.



Energy Efficiency Rating		Current	Potential
Very energy efficient - lower running costs			
(92-100) <b>A</b>			<b>90</b>
(81-91) <b>B</b>			
(69-80) <b>C</b>			
(55-68) <b>D</b>			
(39-54) <b>E</b>		<b>51</b>	
(21-38) <b>F</b>			
(1-20) <b>G</b>			
Not energy efficient - higher running costs			
<b>England &amp; Wales</b>		EU Directive 2002/91/EC	

**IMPORTANT NOTICE:** Every effort has been made to ensure the accuracy of these details however they form no part of any contract and are issued without responsibility on the part of the agents or landlord. Any intending tenant should satisfy themselves by inspection as to the correctness of each statement. Photographs may show only certain parts and aspects of the property at the time when the photographs were taken. We recommend that all information provided is verified by yourselves on inspection.