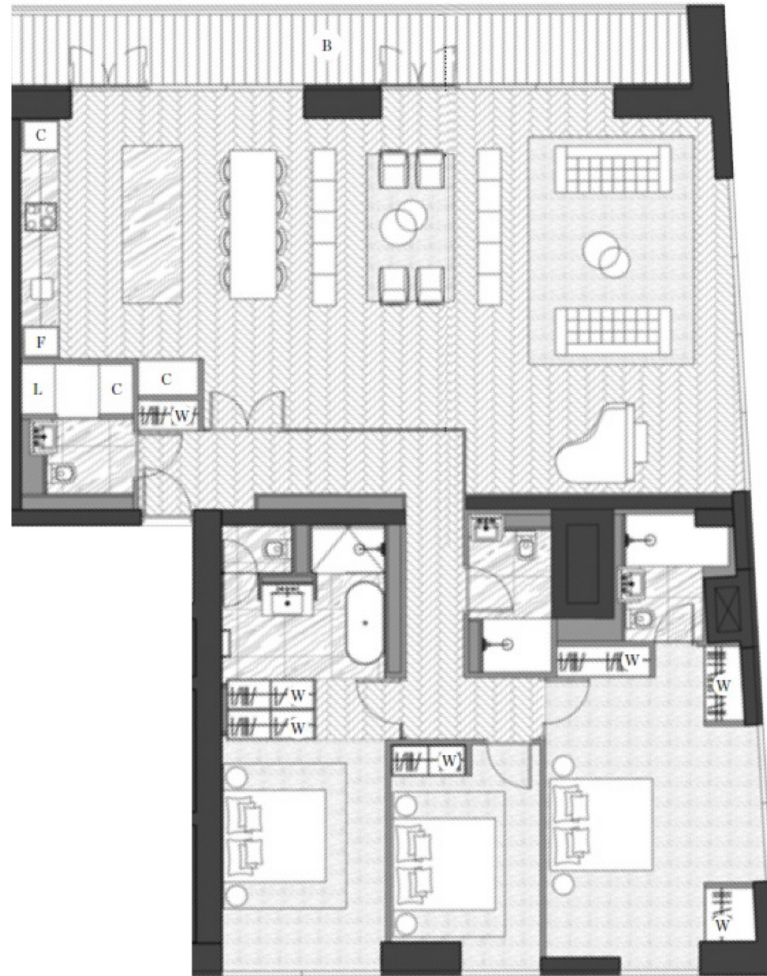




**AMBASSADOR BUILDING, EMBASSY GARDENS,
£5,700,000**

**THE AMBASSADOR BUILDING, EMBASSY GARDENS
FOURTEENTH FLOOR**



3 Bedroom Penthouse
Total area:
191 sqm / 2056 sqft
Living area:
13640 x 6500 mm
Bedroom 1:
5590 x 3135 mm
Bedroom 2:
6300 x 4150 mm
Bedroom 3:
4335 x 2865 mm
Balcony:
17.7 sqm

Central London
↗

