



**THE CORNICHE, 20 ALBERT EMBANKMENT,  
£2,999,950**



An extremely well positioned direct river view three bedroom fourteenth floor apartment of 1,677 sq ft (155.8 sqm), available for off-plan purchase in second tower of The Corniche, 20 Albert Embankment, for completion Q2 2017.

Located in an enviable position on the bank of the River Thames, The Corniche (designed by Foster & Partners) captures some of London's most exquisite views, not only of the Houses of Parliament and the River Thames, but also the Tate Britain, London Eye and the City.

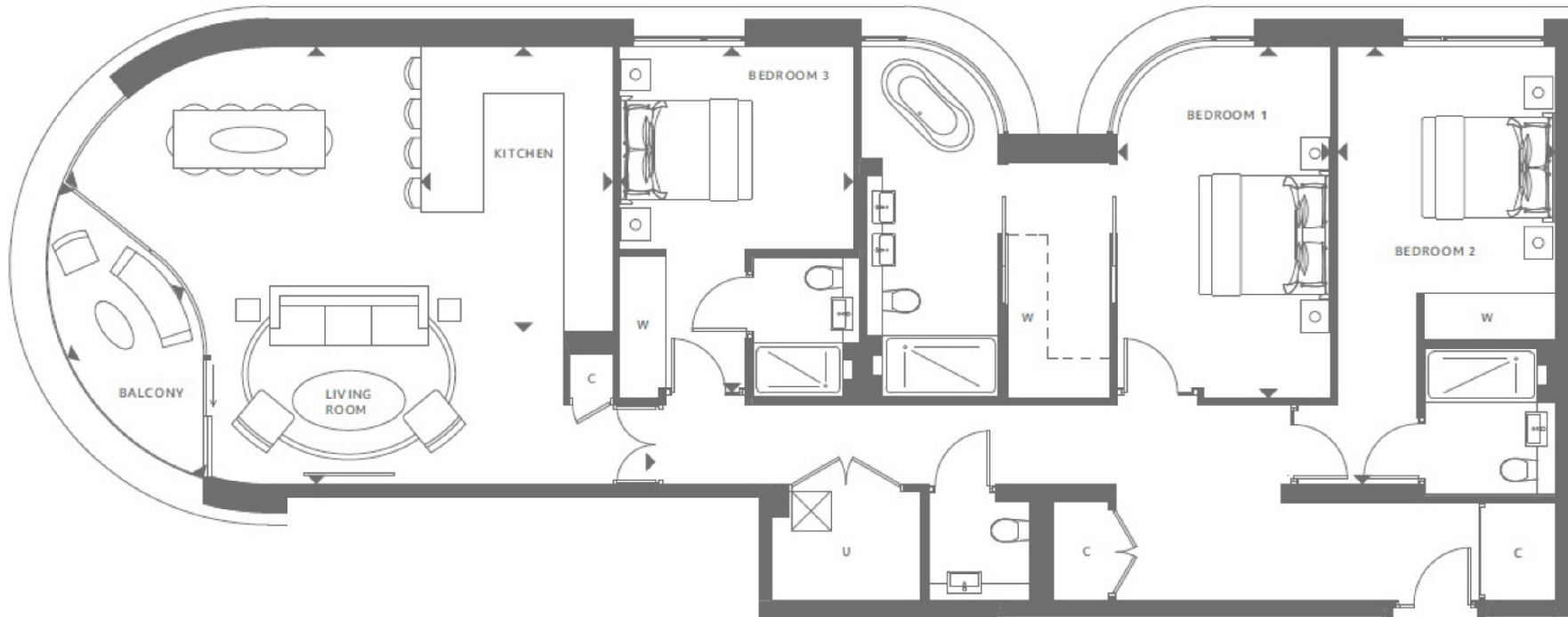
The development includes extensive residents facilities including a restaurant, gym, spa, pool and cinema, and also commercial spaces such as restaurants and cafes focused around a well considered and inviting public space.







**THE CORNICHE, 20 ALBERT EMBANKMENT**  
**FOURTEENTH FLOOR**



Living Room	8.90 x 6.60m	29'3" x 21'8"
Kitchen	2.90 x 4.30m	9'6" x 14'1"
Bedroom 1	3.22 x 5.30m	10'7" x 17'5"
Bedroom 2	3.30 x 6.60m	10'10" x 21'8"
Bedroom 3	3.53 x 5.21m	11'7" x 17'1"
Balcony	4.84 x 2.01m	15'11" x 6'7"
<b>Total Internal Area</b>	<b>155.80 m<sup>2</sup></b>	<b>1,677.0 ft<sup>2</sup></b>
<b>Total External Area</b>	<b>6.24 m<sup>2</sup></b>	<b>67.1 ft<sup>2</sup></b>

