



PROVIDENCE TOWER, CANARY WHARF

£1,090,000



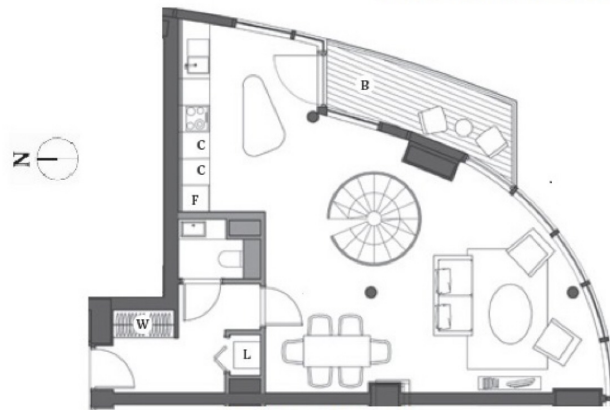
A huge fifteenth floor duplex three bedroom apartment totalling 1,424 sq ft, available as an off-plan investment purchase for completion in 2016. Providence Tower is the final building on the successful New Providence Wharf estate, a high-end residential community located next door to Canary Wharf, the worlds banking centre. Standing at 43 stories tall, the meticulously designed apartments in Providence Tower will have panoramic views across London, as well as outstanding interior finishes. Residents will also enjoy exclusive use of a Sky Lounge and Sky Terrace atop the tower, which will serve as a place for quiet relaxation as well as a hospitality suite for private parties.





PROVIDENCE TOWER, BISCAYNE AVENUE, LONDON E14

FIFTEENTH FLOOR



LOWER FLOOR

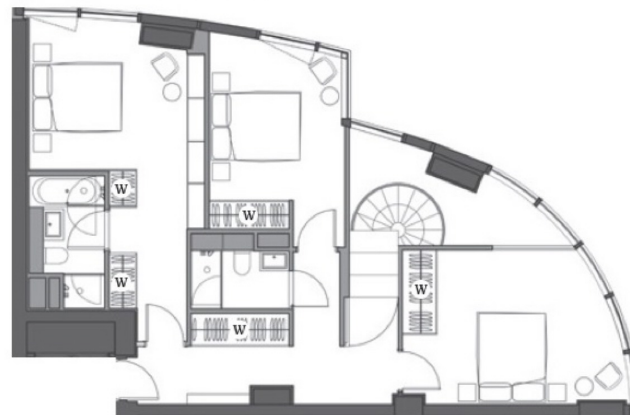
3 Bedrooms Duplex

Total area
1424.1sqft / 132.3sqm

Living / Kitchen
8065 x 7665mm

Bathroom
1845 x 1350mm

Balcony
74.3sqft / 6.9sqm



UPPER FLOOR

