



**EXAMPLE RECEPTION**

**LATITUDE BUILDING, ROYAL WHARF**

**£740,050**



20-30% cheaper than current prices, exclusive to Prime London and the only opportunity to buy at phase 1 prices. A huge and rare 1,200 sq ft three bedroom apartment facing directly onto the river at Royal Wharf, with an attractive payment structure. The payment structure is 20% of purchase price to exchange contracts, with 80% on completion. This property is available as an off-plan investment sale, with the right for multiple assignments, for completion in 2016.

Royal Wharf will consist of 3,385 homes in total, a beautiful riverside walkway, new streets, connecting parks and squares, with the apartment buildings offering very generous 'family sized' apartments. Royal Wharf is located directly next to a new 35 acre development by ABP China, the largest development of its kind in the UK. This state-of-the-art business district will act as a platform for financial, high-tech and knowledge-driven industries looking to establish and drive forward their business in UK and European markets. This site represents one of the first direct investments by a Chinese developer in London's property market and will eventually be home to over 3.2 million square feet of high quality work, retail and leisure space, including 2.5 million square feet of prime office space, creating a new, vibrant 24/7 district on London's waterways.





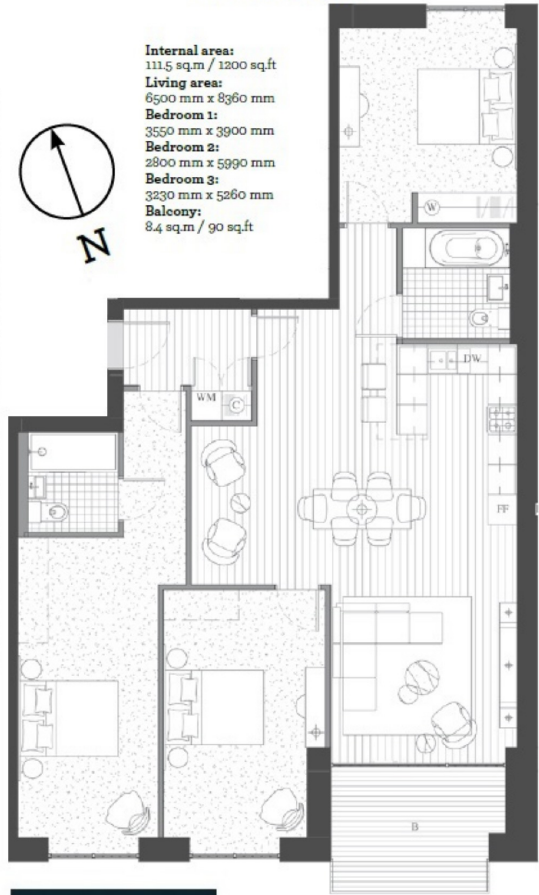






**LATITUDE BUILDING, ROYAL WHARF**

**FOURTH FLOOR**



**Internal area:**  
111.5 sq.m / 1200 sq.ft  
**Living area:**  
6500 mm x 8360 mm  
**Bedroom 1:**  
3550 mm x 3900 mm  
**Bedroom 2:**  
2800 mm x 5990 mm  
**Bedroom 3:**  
3230 mm x 5260 mm  
**Balcony:**  
8.4 sq.m / 90 sq.ft



**RIVER**