



PROVIDENCE TOWER, CANARY WHARF

£1,100,000



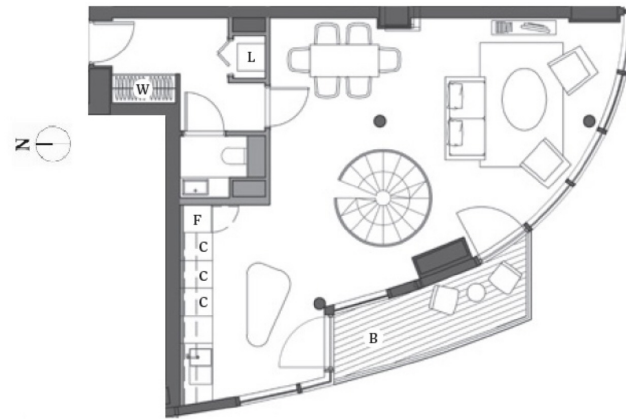
A huge fifteenth floor duplex three bedroom apartment with secure parking, totalling 1,424 sq ft with south and west (Canary Wharf) views, available as an off-plan investment purchase for completion in Q2 2016.

Providence Tower is the final building on the successful New Providence Wharf estate, a high-end residential community located next door to Canary Wharf, the worlds banking centre. Standing at 43 stories tall, the meticulously designed apartments in Providence Tower will have panoramic views across London, as well as outstanding interior finishes. Residents will also enjoy exclusive use of a Sky Lounge and Sky Terrace atop the tower, which will serve as a place for quiet relaxation as well as a hospitality suite for private parties.





PROVIDENCE TOWER, BISCAVNE AVENUE, LONDON E14
FIFTEENTH AND SIXTEENTH FLOOR



Total area
1424.1sqft / 132.3sqm
Living / Kitchen
8065 x 7665mm
Bathroom
1845 x 1350mm
Balcony
74.3sqft / 6.9sqm
Bathroom
2200 x 1310mm
Bedroom 1
3500 x 3545mm
Ensuite 1
2930 x 1700mm
Bedroom 2
4350 x 3800mm
Bedroom 3
5115 x 3475mm

