



THE QUARTER PENTHOUSES, BATTERSEA

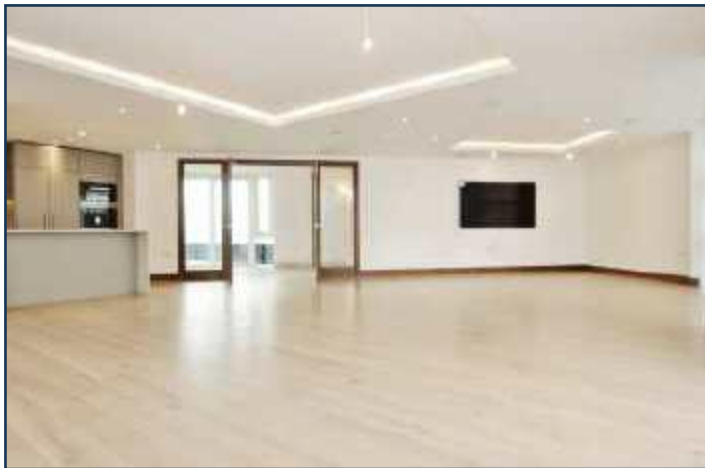
£2,950,000



An exclusive and beautifully designed penthouse of 2,497 sq ft internally and 1,612 sq ft externally, with two parking spaces, situated on the seventh and eighth floor of this brand new building within the award-winning Battersea Reach development.

The property comprises on the lower level a large entry hall, reception room leading on to private terrace, luxury semi open-plan kitchen, separate utility room and two double bedrooms both with en suite facilities and access to private terrace areas. On the top floor there is a luxury master bedroom with walk in wardrobe, en-suite bathroom and access to large roof terrace with far reaching views.

Battersea Reach itself provides many on-site amenities, including restaurants and bars, a residents only fitness suite, convenience shopping and a 24 hour concierge service. Available with remainder of 999 year leasehold.







THE QUARTET PENTHOUSES, QUARTER HOUSE, BATTERSEA REACH

SEVENTH AND EIGHTH FLOORS

GROSS INTERNAL AREA 2,497 SQ FT / 232 SQM

GROSS EXTERNAL AREA 1,612 SQ FT / 149.7 SQM

