



**THE TOWER, ONE ST GEORGE WHARF, NINE
£2,599,950**



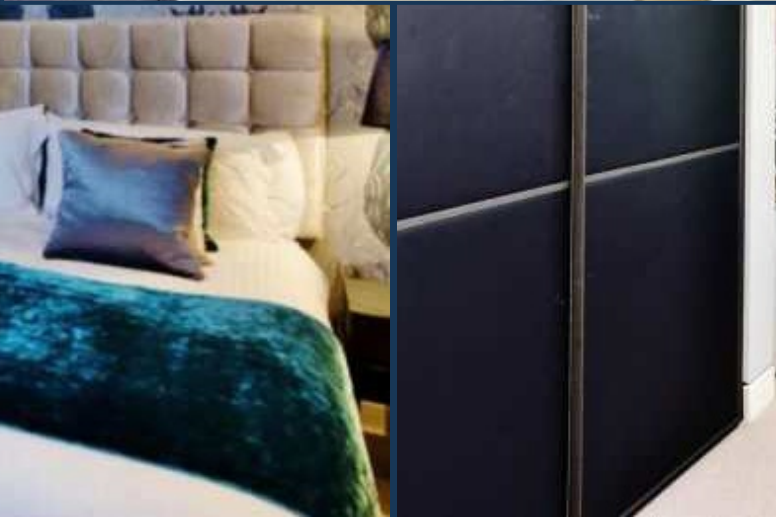
An exquisitely furnished and designed apartment directly over the river and with views to Westminster, totalling 1,423 sq ft (132 sqm) and available for chain free sale at The Tower, One St. George Wharf.

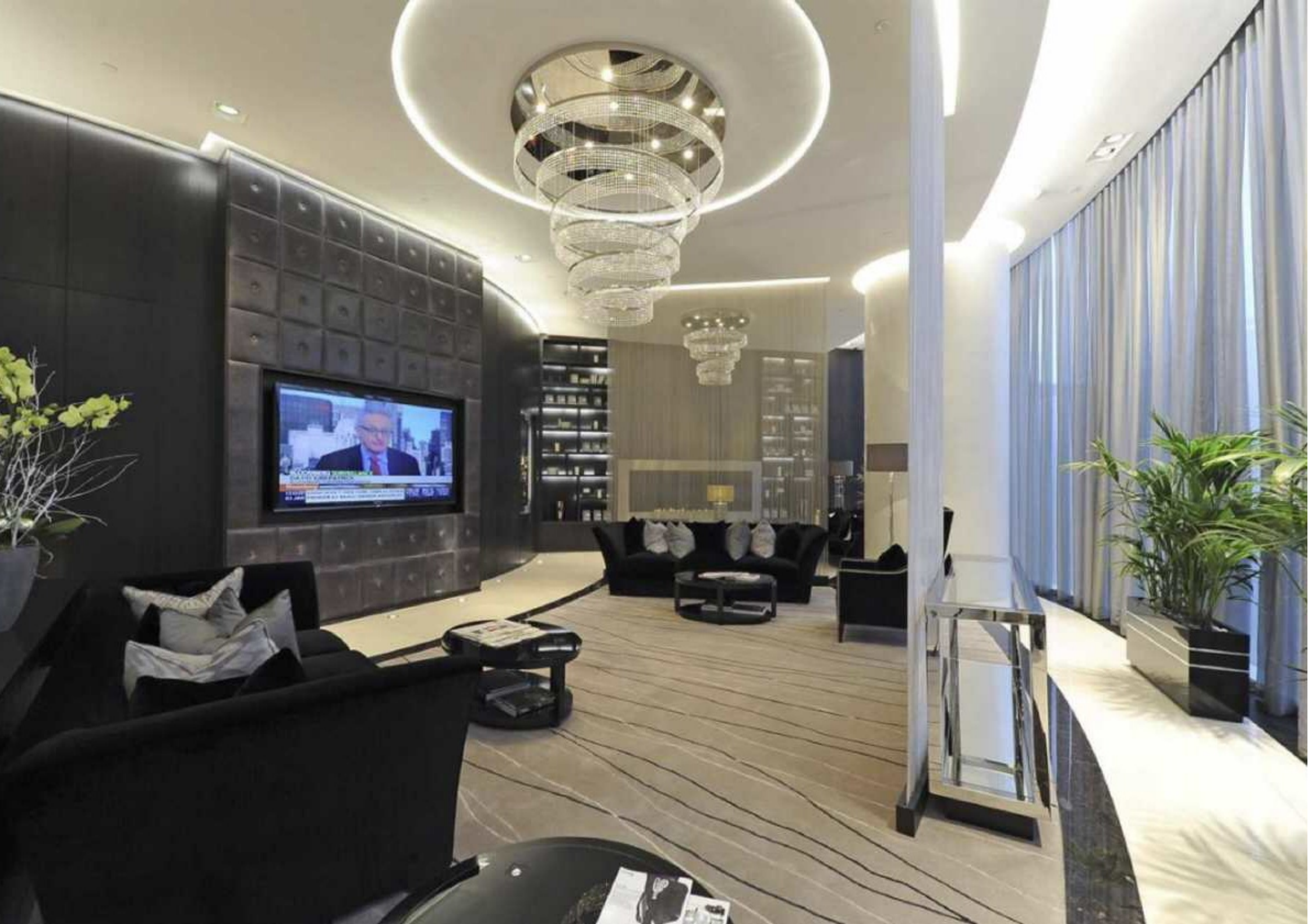
The apartment offers a fully integrated kitchen with Miele appliances, high specification bathrooms with exquisite tiling and fittings, comfort cooling, touch panel controls, recessed lighting and automated winter garden.

This property offers a valet parking service, and also a dedicated door service, 24 hour concierge, private health club with gym, infinity hydro pool, sauna and steam room, business facilities including a boardroom with conference facility, a business lounge and a private screening room and landscaped exterior gardens.

Call today to book your appointment to view.







THE TOWER, ONE ST GEORGE WHARF, NINE ELMS, SW8
APPROXIMATE GROSS INTERNAL AREA 1423 SQ FT / 132 SQM

