







GUDIE PRICE £750,000

A luxury three double bedroom ground floor apartment within this development of only ten apartments set within 6.5 acres of formal grounds.

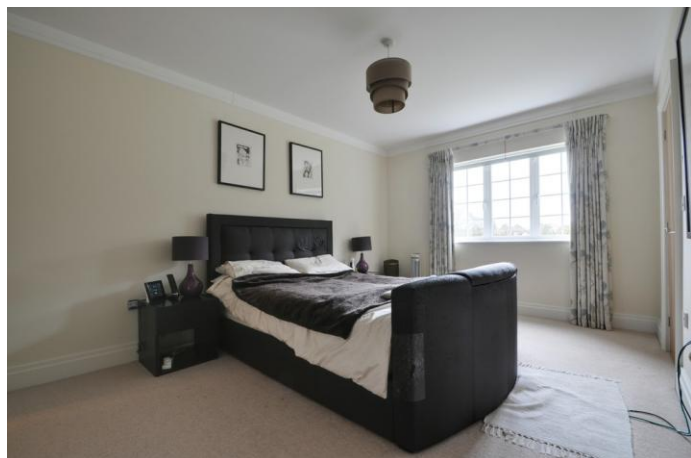
This exceptionally spacious accommodation includes separate entrance hallway and high specification kitchen with granite worktops, double oven and wine chiller.

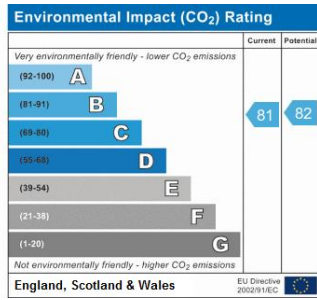
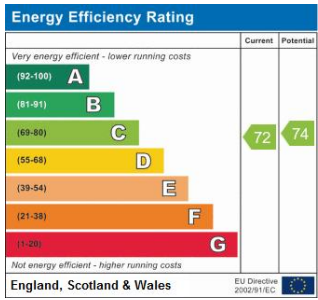
The living area is open plan with the dining area and has two pairs of patio doors leading to the garden. From the hallway the property has a separate wc, utility room with sink and washer/dryer and two storage cupboards.

The master bedroom is a generous size with walk in wardrobe and en-suite shower room. The second bedroom includes built in wardrobes with access to the family bathroom and a third double bedroom.

The property also benefits from two secure under block parking spaces, under block storage locker, video entry system, alarm, gated site, visitors parking, under floor heating throughout and offered with no onward chain.

Viewings are highly recommended.





Please refer to

---

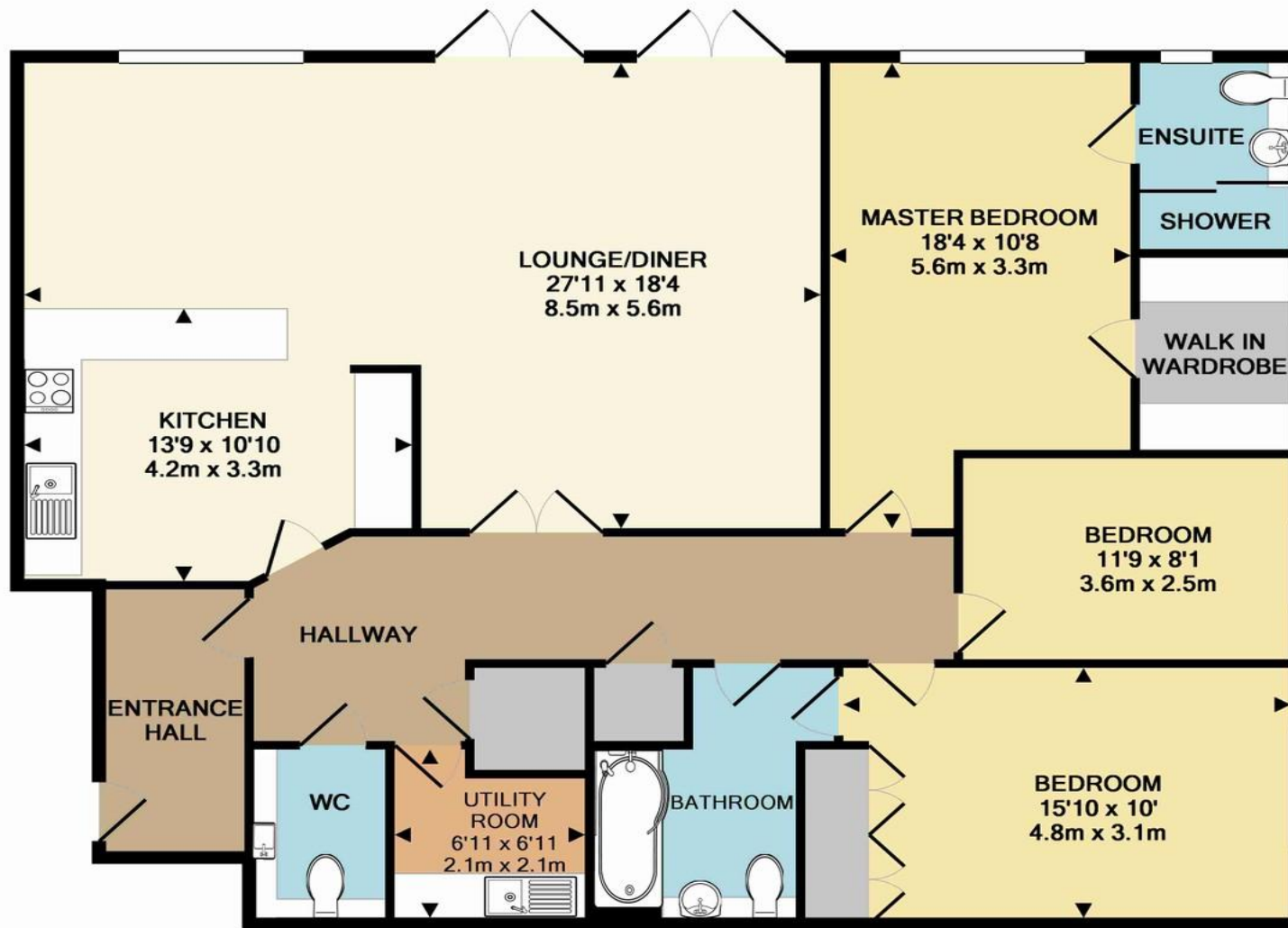
[www.jdmestateagents.com](http://www.jdmestateagents.com)

---

to view our full area guides







TOTAL APPROX. FLOOR AREA 1426 SQ.FT. (132.4 SQ.M.)

Whilst every attempt has been made to ensure the accuracy of the floor plan contained here, measurements of doors, windows, rooms and any other items are approximate and no responsibility is taken for any error, omission, or mis-statement. This plan is for illustrative purposes only and should be used as such by any prospective purchaser. The services, systems and appliances shown have not been tested and no guarantee as to their operability or efficiency can be given

Made with Metropix ©2016

