



**OLD SWAN WHARF, BATTERSEA**

**£2,750,000**





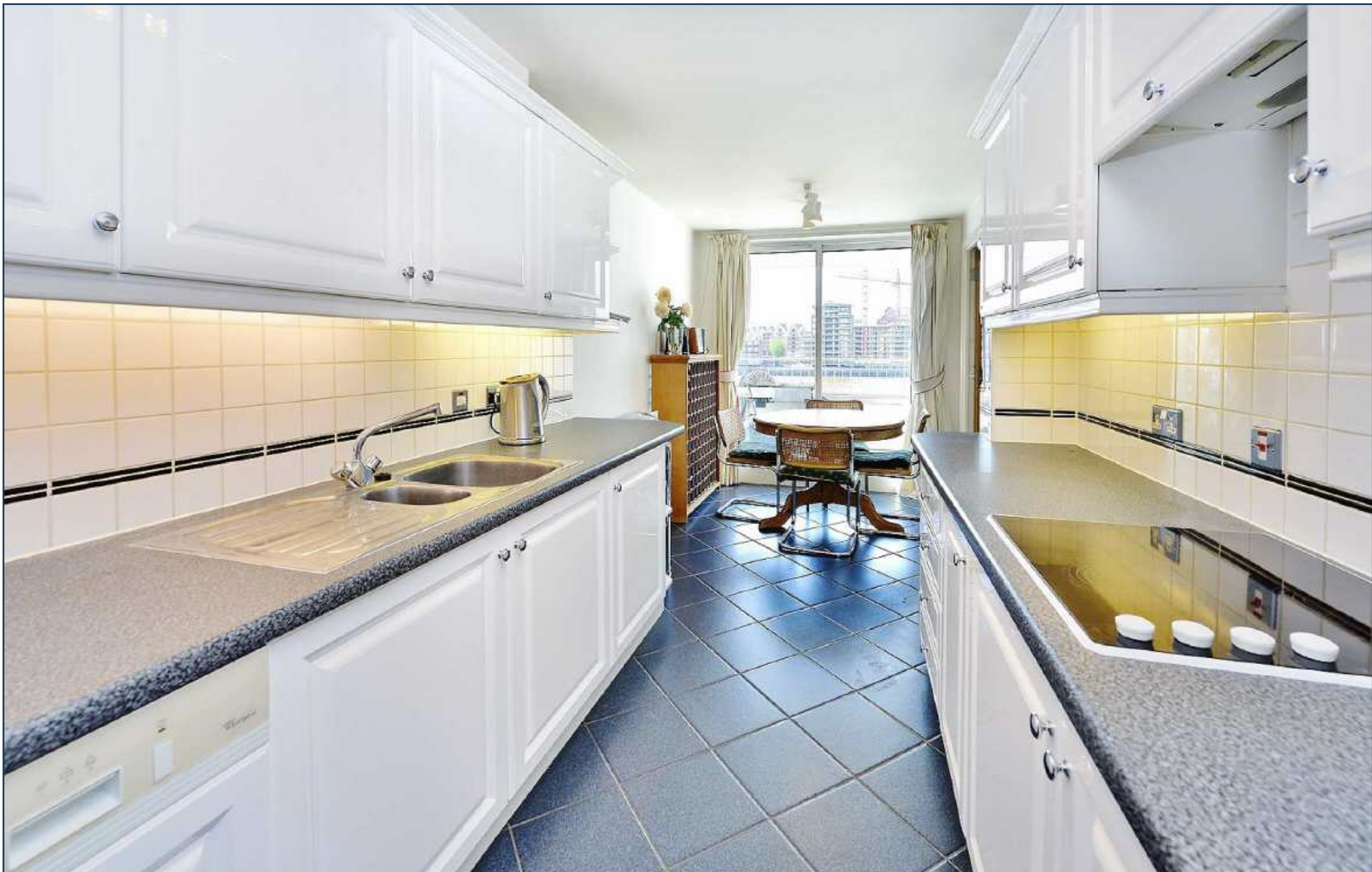
An extraordinary duplex penthouse apartment directly on the river's edge, in this extremely private development adjacent to Battersea Square and with views to Chelsea and Fulham.

This apartment offers nearly 1,700 sq ft of interior space and approximately 700 sq ft of terrace space, three double bedrooms (all with en suite facilities) and secure underground parking for four vehicles. The property further offers a bright dual aspect reception, kitchen with dining area and direct terrace access, Old Swan Wharf is situated next to St. Mary's Church, a Grade 1 listed building, and the Richard Rogers development Montevetro. The popular restaurants and cafes of Battersea Square are moments away, and the boutiques of Kings Road and Chelsea are also within easy reach.

Available with Share of Freehold, chain free.







**OLD SWAN WHARF, 116 BATTERSEA CHURCH ROAD, SW11  
THIRD AND FOURTH FLOORS  
APPROXIMATE GROSS INTERNAL AREA 1,680 SQ FT / 156.1 SQM**

