





LAUNCH DAY – SATURDAY 23rd JULY

Fabulous spacious ground floor three bedroom apartment in sought after residential road close to the heart of the village.

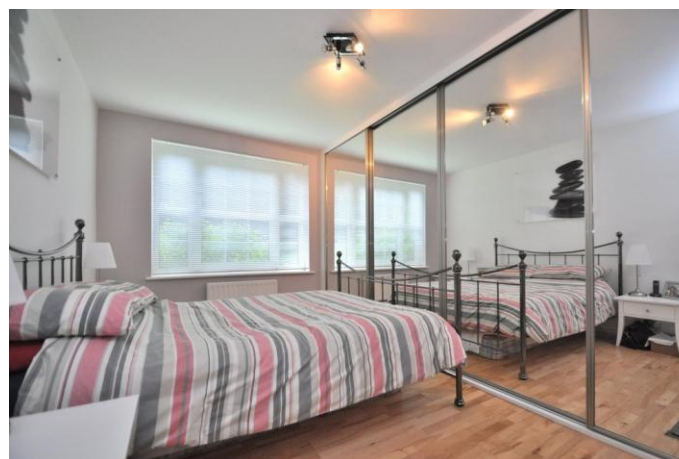
Offered to the market in very good order, comprising of large lounge some 19'9 x 17'6 plus dining area of 11'5 x 6'1. There is also a well-appointed kitchen with fitted appliances, three bedrooms and contemporary shower room.

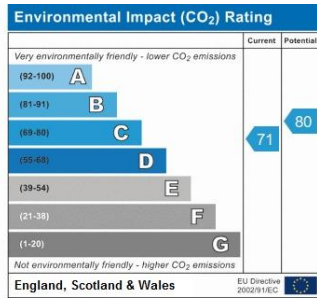
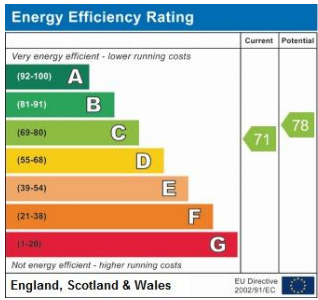
This block of 12 apartments sits in beautiful grounds and having the added benefit of a Tennis court, Wimbledon fans can re-enact their Murray moment.

This property is share of the freehold with a long lease running alongside.

Allocated parking and garage en-bloc.

This is one to view as soon as possible.





Please refer to

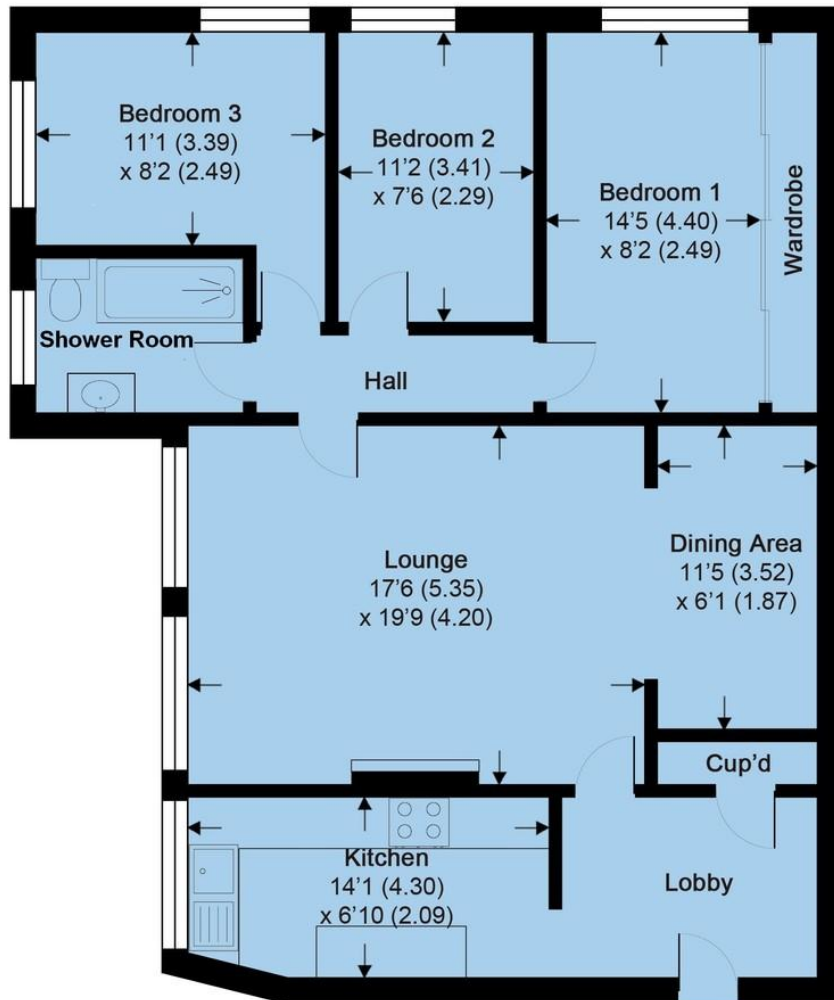
www.jdmestateagents.com

to view our full area guides



2 Mulbarton Court

APPROX. GROSS INTERNAL FLOOR AREA 985.97 SQFT / 91.60 SQM



This is for guidance only, not to scale and must not be relied upon as a statement of fact.
Attention is drawn to the notice on these particulars.

