



CAPITAL BUILDING, EMBASSY GARDENS, NINE

£3,049,950

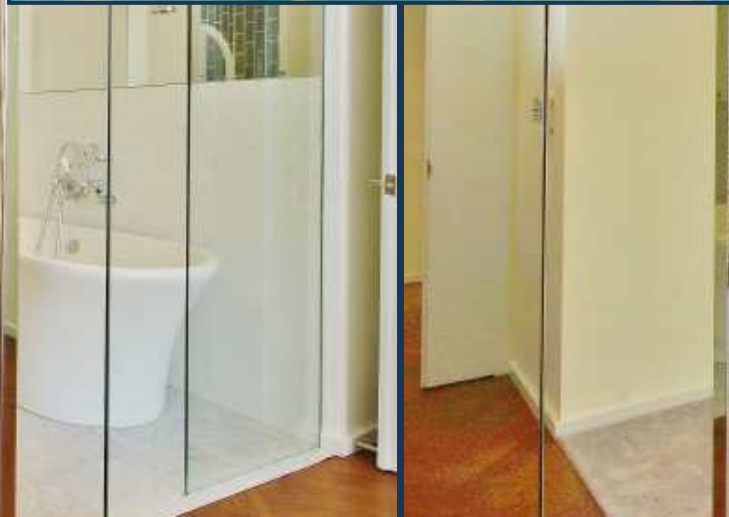


A double-height loft penthouse apartment on the twelfth and thirteenth floor, with full river views, roof terrace and secure parking, available as a chain free brand new purchase for first time occupation in The Capital Building, Embassy Gardens.

Designed to the highest specification, the apartment boasts comfort cooling and abundant natural light reminiscent of a Manhattan loft apartment. Located on the banks of the Thames and near London's cultural South bank, residents not only enjoy a wealth of the Capital's finest attractions and amenities practically on their doorstep but also premium residents facilities including an exclusive private club and health spa, which is set to rival the best international hotels in the world.

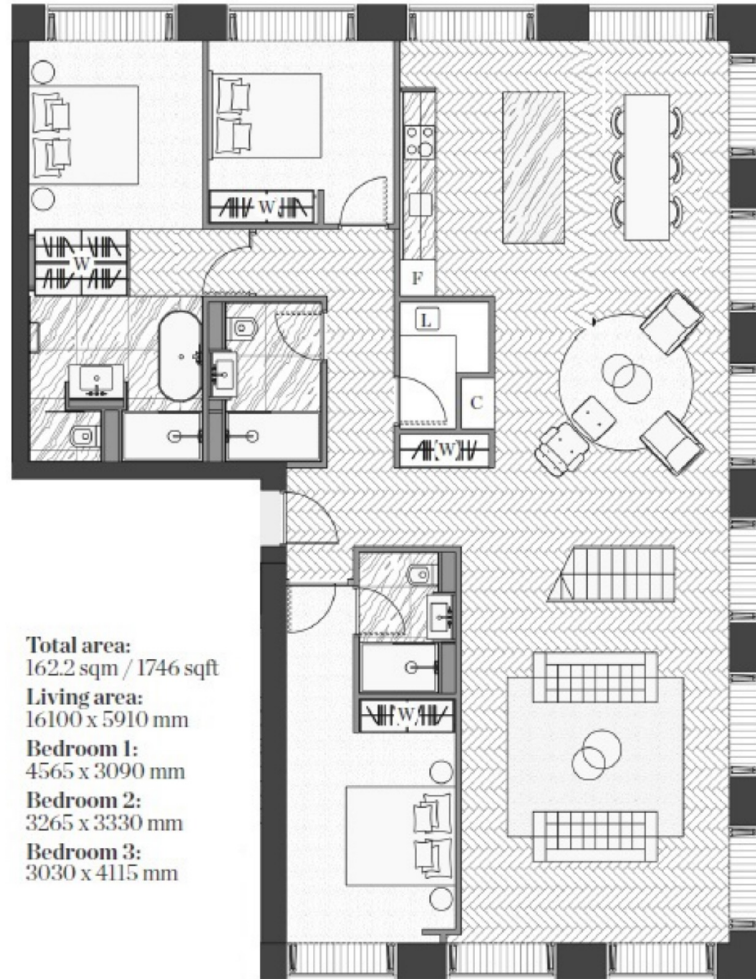
Available to view now via Prime London.







CAPITAL BUILDING, EMBASSY GARDENS, LONDON SW8



Total area:
162.2 sqm / 1746 sqft
Living area:
16100 x 5910 mm
Bedroom 1:
4565 x 3090 mm
Bedroom 2:
3265 x 3330 mm
Bedroom 3:
3030 x 4115 mm

