





Available immediately.

WOW! What a location!

This super, newly renovated three bedroom apartment could not be better located, situated literally a stone's throw from the Heath and a 7 minute walk (according to Google Maps) to the vibrant and classy Blackheath Village. If that isn't impressive enough, how about living only half a mile from the famous Greenwich Park!

The property itself has under gone complete renovation, offering a spacious, modern kitchen/living area, newly fitted, stylish bathroom and separate WC, three bedrooms, Westerly facing balcony overlooking the immaculately tended communal gardens.

The property also has the added benefit of plenty of fitted storage.

We hold keys, call our Blackheath Village office to arrange an appointment to view.

No DSS, No pets, No smokers. The property is part furnished.



Please refer to

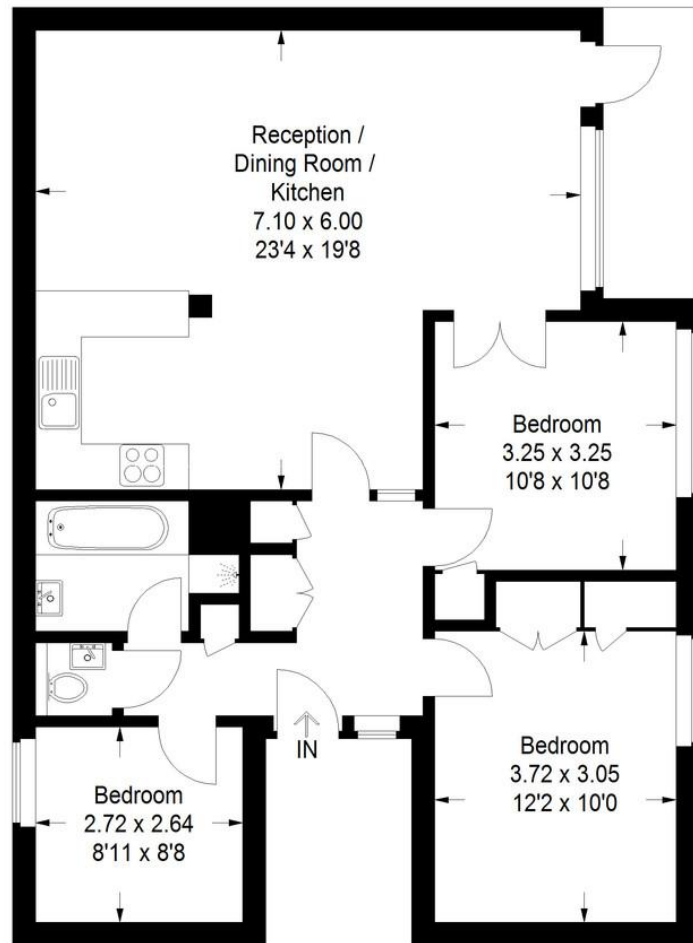
www.jdmestateagents.com

to view our full area guides



South Row, SE3

Approximate Gross Internal Area = 86.1 sq m / 927 sq ft



First Floor

Illustration for identification purposes only,
measurements are approximate, not to scale.
FloorplansuSketch.com © 2016 (ID274531)

