



CAPITAL BUILDING, EMBASSY GARDENS, NINE
£1,250 PER WEEK



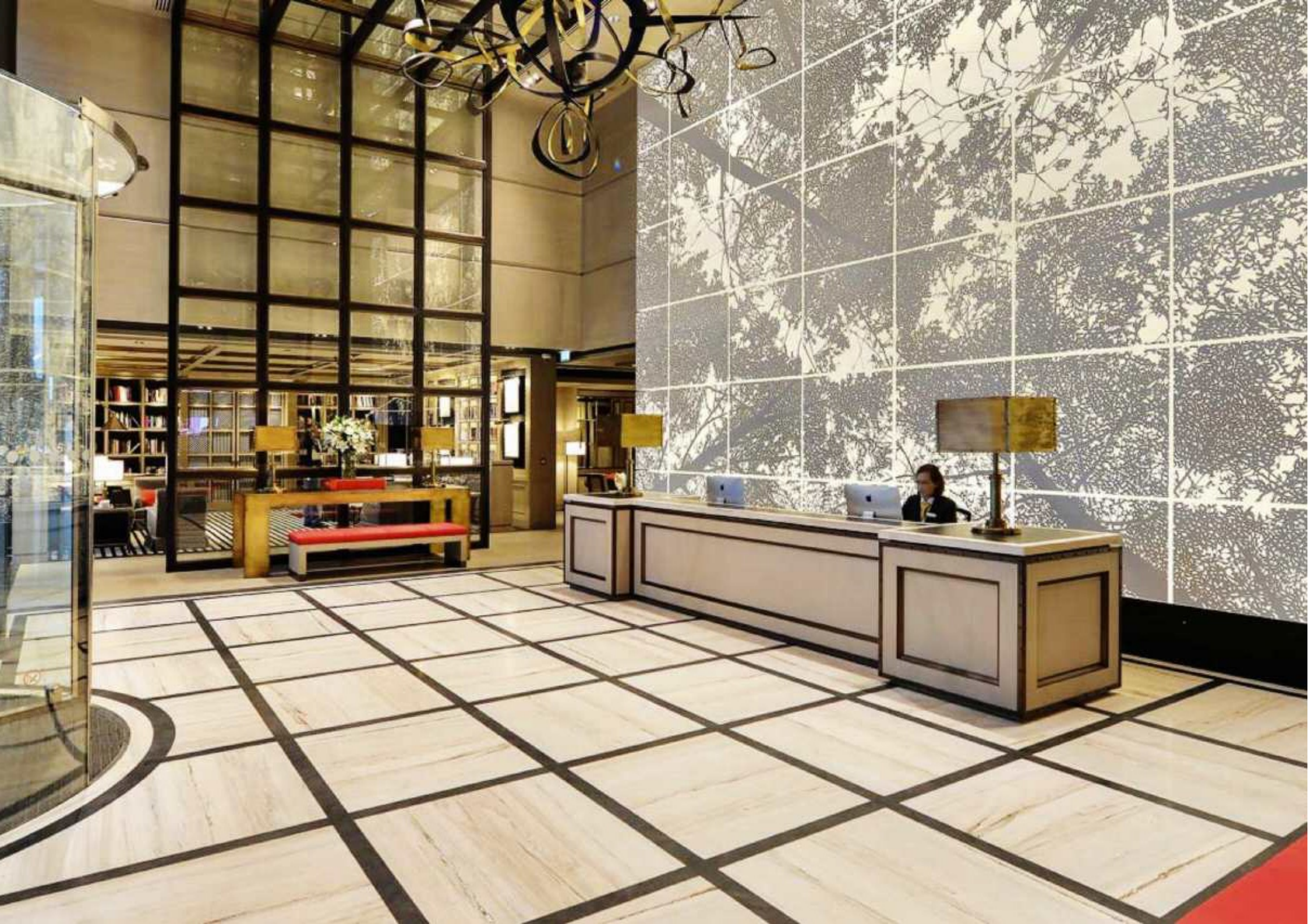
A beautifully furnished three bedroom apartment of 1,288 sq ft (119.7 sqm) with river views and secure parking, available for first time occupation in The Capital Building, Embassy Gardens.

Designed to the highest specification, the apartment boasts a sizable winter garden, comfort cooling and abundant natural light reminiscent of a Manhattan loft apartment. Located on the banks of the Thames and near London's cultural South bank, residents not only enjoy a wealth of the Capital's finest attractions and amenities practically on their doorstep but also premium residents facilities including an exclusive private club and health spa, which is set to rival the best international hotels in the world.

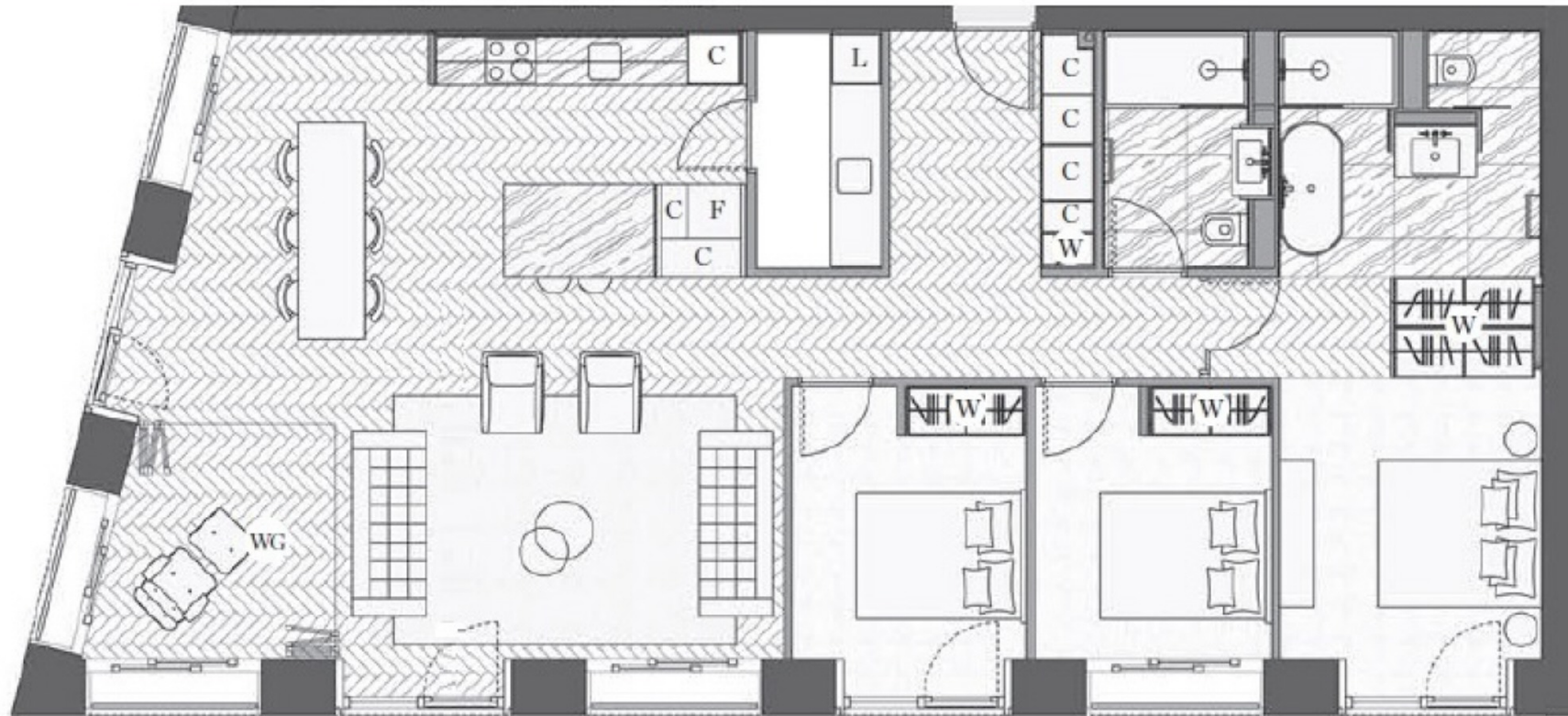
Available to view now via Prime London.







CAPITAL BUILDING, EMBASSY GARDENS, LONDON SW8



Total area:
119.7 sqm / 1288 sqft

Living area:
7700 x 7500 mm

Bedroom 1:
4565 x 3135 mm

Bedroom 2:
3265 x 2800 mm

Bedroom 3:
3265 x 2800 mm

Winter Garden:
7.6 sqm

