



**FLAGSTAFF HOUSE, ST GEORGE WHARF, NINE**  
**£995 PER WEEK**



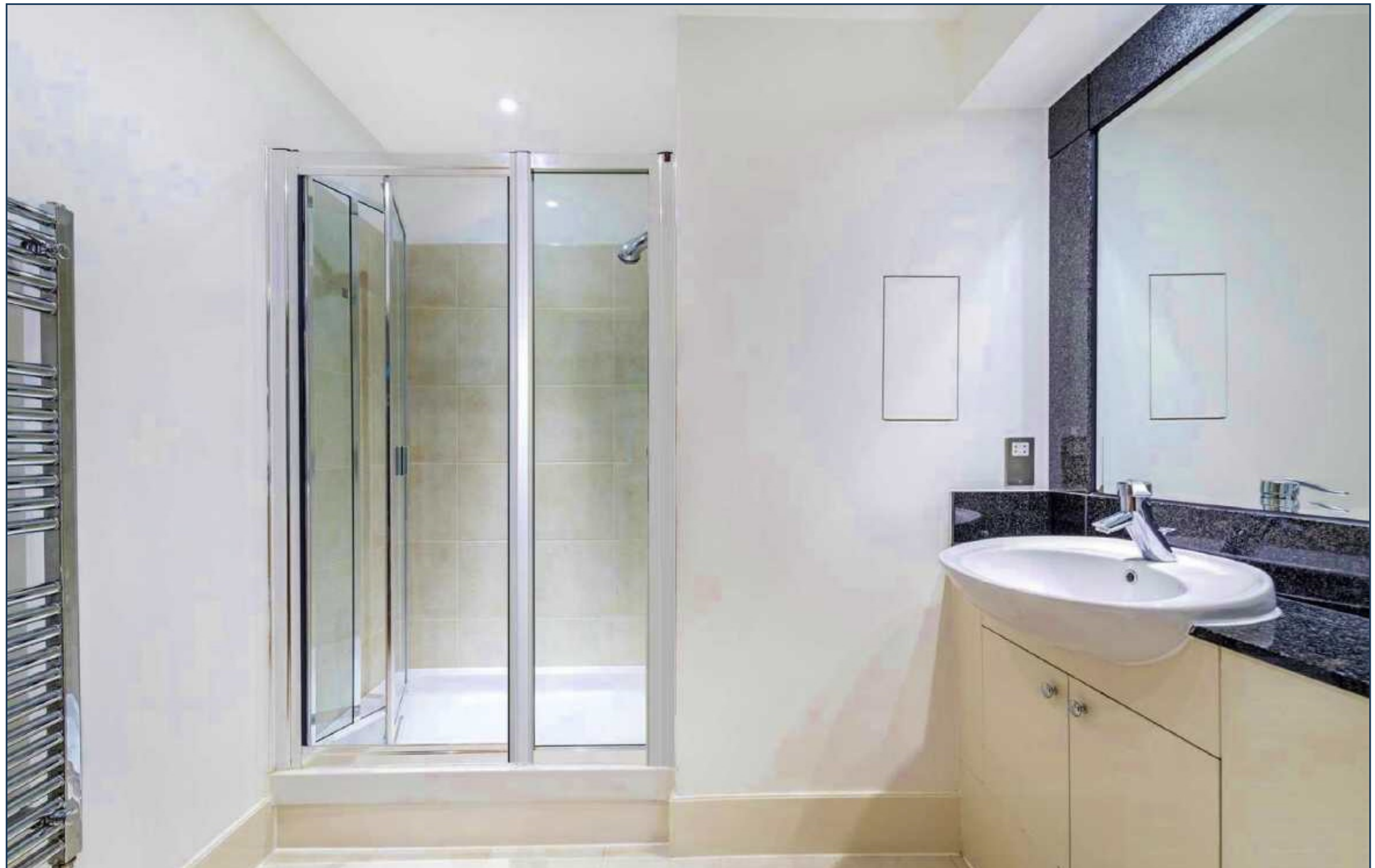
With excellent westerly views from the 11th floor, this three bedroom prow apartment of over 1,500 sq ft offers an excellent layout and position in St George Wharf. The apartment is available on a long term basis from early October.

This apartment offers a generous reception, perfect for entertaining with balcony and views accessible throughout, three double bedrooms (two with en suite facilities and master with access to balcony and views of the river) and separate family bathroom.

This apartment benefits from the fantastic transport links afforded by this very well kept complex by The River Thames. Within, there are restaurants, bars, coffee shops, Gym, pharmacy and Tesco Express.

Available to view now via Prime London.





**FLAGSTAFF HOUSE, ST GEORGE WHARF, LONDON SW8**  
**GROSS INTERNAL AREA 1,550 SQ FT / 144 SQM**

