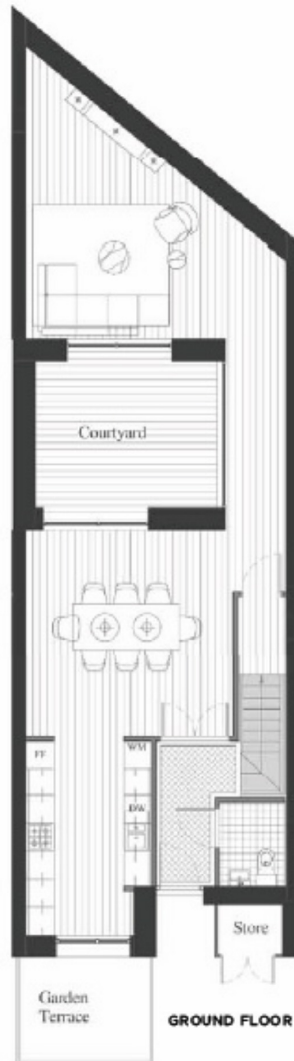




**TOWNHOUSE, ADMIRALTY BUILDING, ROYAL**  
**£826,000**

**TOWNHOUSE, THE ADMIRALTY BUILDING  
 ROYAL WHARF, E16**

APPROXIMATE GROSS INTERNAL AREA  
 1,770 SQ FT / 164.4 SQM



<b>Kitchen area:</b> 4200 mm x 2690 mm	<b>First floor terrace:</b> 36.0 sq.m / 387 sq.ft
<b>Dining area:</b> 4440 mm x 4420 mm	<b>Second floor balcony:</b> 4.8 sq.m / 52 sq.ft
<b>Living area:</b> 5545 mm x 4450 mm	<b>Garden terrace:</b> 8.5 sq.m / 70 sq.ft
<b>Bedroom 1:</b> 4425 mm x 3160 mm	<b>Courtyards:</b> 12.7 sq.m / 137 sq.ft
<b>Bedroom 2:</b> 4200 mm x 3160 mm	<b>Bedroom 3:</b> 7150 mm x 3160 mm