



Sandra Davidson are please to offer an opportunity to acquire this new build three bedroom house set over four floors, located within walking distance to Hackney Central station, local shops and amenities. The property benefits from three bedrooms, good size lounge, fully fitted kitchen/diner, ground floor w.c, en-suite to main bedroom, decked roof terrace and has been finished to a high standard and comprises:-





ENTRANCE

LOUNGE 4.4m x 3.9m (14'5" x 12'10")

GROUND FLOOR WC

KITCHEN/DINER 5.0m x 4.7m (16'5" x 15'5")

1ST FLOOR LANDING

BEDROOM ONE 5.5m x 3.5m (18'1" x 11'6")

EN-SUITE BATHROOM

2ND FLOOR LANDING

BEDROOM TWO 3.6m x 2.5m (11'10" x 8'2")

BEDROOM THREE 3.2m x 3.0m (10'6" x 9'10")

FAMILY BATHROOM

3RD FLOOR LANDING

ROOF TERRACE 4.1m x 3.4m (13'5" x 11'2")

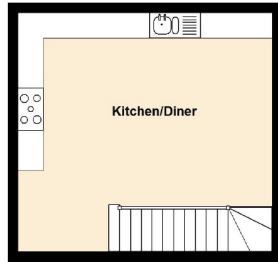






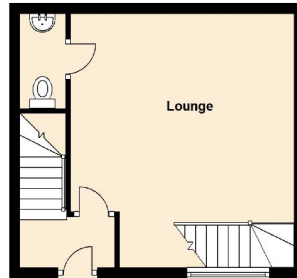
Lower Ground Floor

Approx. 23.5 sq. metres (253.0 sq. feet)



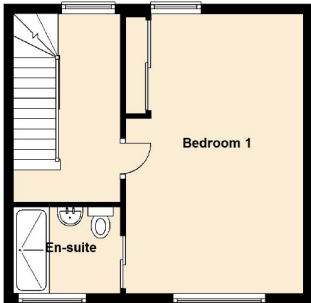
First Floor

Approx. 27.4 sq. metres (294.6 sq. feet)



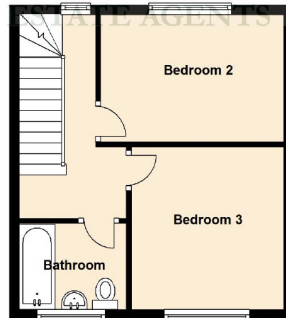
Second Floor

Approx. 31.3 sq. metres (337.3 sq. feet)



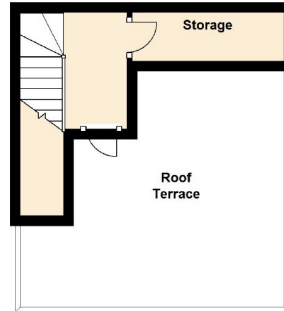
Third Floor

Approx. 30.1 sq. metres (324.4 sq. feet)



Fourth Floor

Approx. 9.2 sq. metres (99.3 sq. feet)



Total area: approx. 121.6 sq. metres (1308.6 sq. feet)

This plan is for illustration purposes only and may not be representative of the property/Plan created by Sandra Davidson Estate Agentswww.sandradaavidson.com
Plan produced using PlanUp.