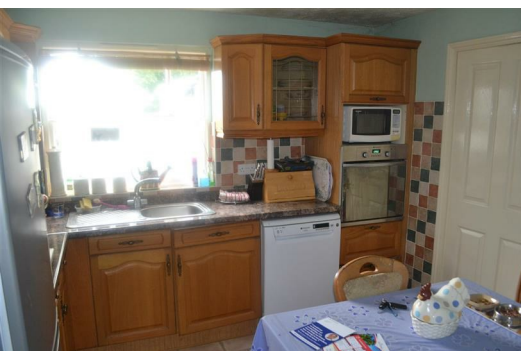





9, Swan Court, Worksop, South Yorkshire, S81 8TG

Bettermove is pleased to present this 3 bed detached property located in the heart of Sheffield. Benefiting from Gas Central Heating, UPVC Double Glazing, Front and Rear Gardens and Off Street parking with single garage and over head storage.

The property is located near local amenities and is accessible to local transport links too.



Energy Efficiency Rating		
	Current	Potential
<i>Very energy efficient - lower running costs</i>		
(92 plus) A		
(81-91) B		
(69-80) C		
(55-68) D		
(39-54) E		
(21-38) F		
(1-20) G		
<i>Not energy efficient - higher running costs</i>		
England & Wales	EU Directive 2002/91/EC	

Environmental Impact (CO ₂) Rating		
	Current	Potential
<i>Very environmentally friendly - lower CO₂ emissions</i>		
(92 plus) A		
(81-91) B		
(69-80) C		
(55-68) D		
(39-54) E		
(21-38) F		
(1-20) G		
<i>Not environmentally friendly - higher CO₂ emissions</i>		
England & Wales	EU Directive 2002/91/EC	