



**Grasmere Street, Leicester
Leicestershire LE2 7FS**

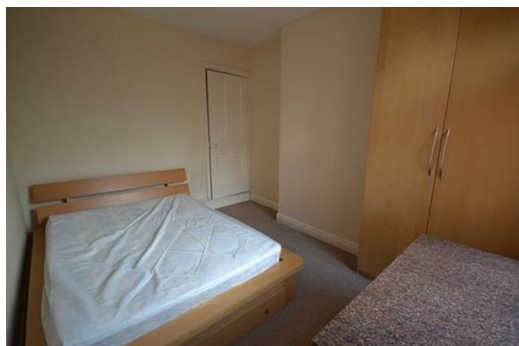
£834 Per Month

"STUDENT PROPERTY"

FREE STANDARD VIRGIN MEDIA BROADBAND

- 2 Double Bedrooms
- 1 Single Bedroom
- Gas Central Heating
- Double Glazed
- Carpeted throughout
- Fully Furnished
- One Reception Room
- Newly Carpeted 12months ago
- HALF RENT JULY & AUGUST

Grasmere Street
LEICESTER
LE2 7FS



A well maintained two bedroom terraced property on Grasmere Street, 2 minute walk to De Montfort & a stones throw away from the Royal Infirmary.

The property is neutrally decorated with a good sized living room, a separate kitchen. Which consists of washing machine, Electric Cooker/Oven & fridge/freezer.

The first floor includes 2 double bedrooms. The bathroom is situated upstairs & has a bath and shower.

Ground floor consists of a lounge (with sofas & coffee table), kitchen and a bedroom which is also smaller bedroom

All Bedrooms are furnished with:

- Double beds
- Wardrobes
- Desks & Chairs

Based on 3 people sharing:

2 x Doubles £67.50 per week/per person

1 x Smaller Double (with 4ft Bed, width) £57.50 per week/per person

Restrictions:

- We are looking for a group of 3 Students and will not rent each room out separately.
- This property will only be let to Students or those who are studying/ training.
- Unfortunately the Landlord will not accept DSS/Housing Benefit/Pets.

Date available: 1st May 2016

Furnishing: Fully Furnished

Deposit: £299.00 each (Minimum 3 tenants)

Letting type: 12 months

Property Type: Mid Terrace

Entrance Type: Front Door leading into a Hallway

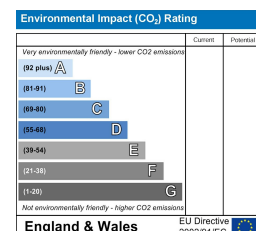
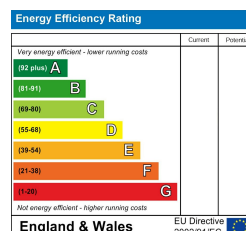
Distance to DMU: 0.1 mile (Approx. 2minute walk)

Distance to University of Leicester: 1 mile (Approx. 19minute walk)

Administration Fee:

An Admin Fee is to cover the costs of your references and the preparation of your legal documentation. Currently the fee is £85.00 per tenant.

Call Now!!



29 Commercial Street, Swindon, SN1 5NS

Tel: 01793 535777 Email: sales@swindonhomedirect.co.uk Web: www.swindonhomedirect.co.uk