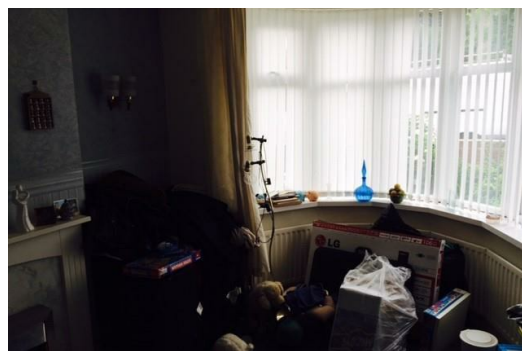





39, Whickham View, Newcastle Upon Tyne, Tyne & Wear, NE15 6TB

BetterMove is pleased to present this 3 bedroom semi detached house. The property comprises; hallway, lounge, dining room, kitchen, utility, stairs to first floor, three bedrooms and a bathroom. Externally there are gardens to the front and rear with a driveway and a garage. Benefiting from gas central heating, double glazing, garage and off street parking.

It is conveniently located for all local amenities, shops, public transport and routes to A1 and A69. B



Energy Efficiency Rating		
	Current	Potential
<i>Very energy efficient - lower running costs</i>		
(92 plus) A		
(81-91) B		
(69-80) C		
(55-68) D		
(39-54) E		
(21-38) F		
(1-20) G		
<i>Not energy efficient - higher running costs</i>		
England & Wales	EU Directive 2002/91/EC	

Environmental Impact (CO ₂) Rating		
	Current	Potential
<i>Very environmentally friendly - lower CO2 emissions</i>		
(92 plus) A		
(81-91) B		
(69-80) C		
(55-68) D		
(39-54) E		
(21-38) F		
(1-20) G		
<i>Not environmentally friendly - higher CO2 emissions</i>		
England & Wales	EU Directive 2002/91/EC	