



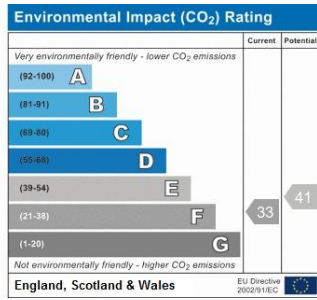
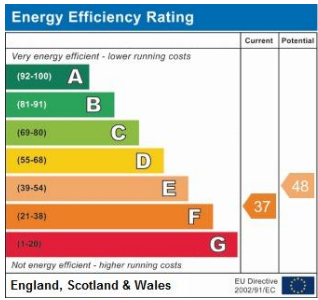


A light, airy and spacious three bedroom Victorian cottage situated in the heart of Chislehurst village close to the common, ponds and shops.

Features include a fitted kitchen, downstairs bathroom fitted with a white suite and two good sized reception rooms.

To the rear is a lovely garden which is mainly laid to lawn with summer house/office with power and light. To the front there is off street parking.





Please refer to

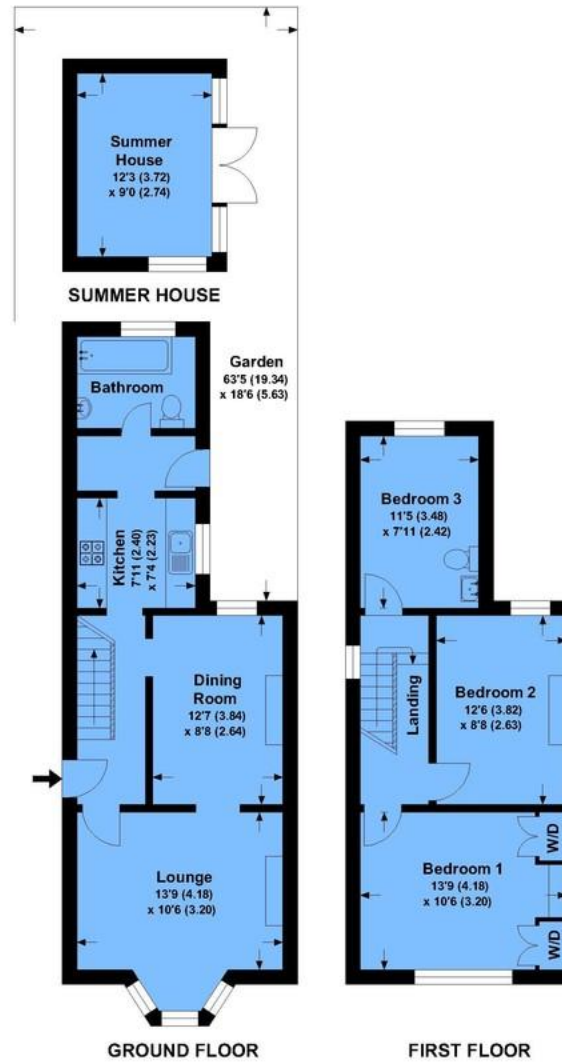
www.jdmestateagents.com

to view our full area guides



Green Lane

APPROX. GROSS INTERNAL FLOOR AREA 902.23 SQFT / 83.82 SQM.EX SUMMER HOUSE



This is for guidance only, not to scale and must not be relied upon as a statement of fact. Attention is drawn to the notice on these particulars.

