





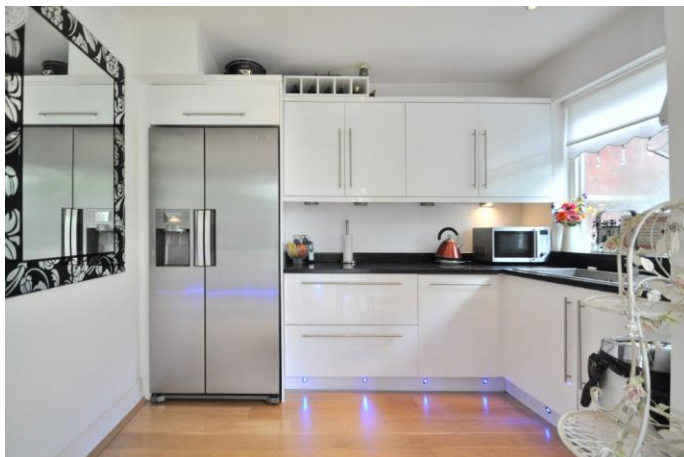
We are pleased to offer this spacious semi detached house with large lounge/dining room and open plan access to the modern fitted and extended kitchen.

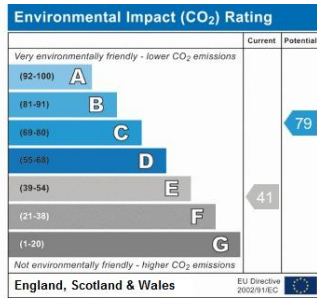
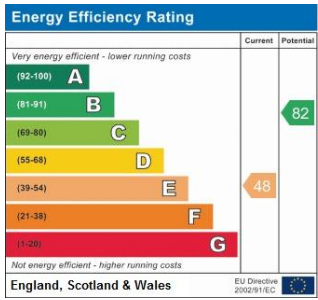
On the first floor are three bedrooms and a bathroom fitted with a contemporary white suite.

To the rear is a good sized garden which is mainly laid to lawn and enjoys a pleasant southerly aspect.

There is a single garage accessible via shared drive.

The property is situated in a pretty tree lined road one mile from Elmstead Woods station and Chislehurst High Street. Early viewing is recommended.





Please refer to

www.jdmestateagents.com

to view our full area guides



Oakdene Avenue

APPROX. GROSS INTERNAL FLOOR AREA 849.38 SQFT / 78.91 SQM. Exc. GARAGE



This is for guidance only, not to scale and must not be relied upon as a statement of fact. Attention is drawn to the notice on these particulars.

