





Situated on the edge of Greenbelt land is this three bedroom semi detached house. The property is well located for Orpington mainline station serving several London termini, the Nugent Centre as well as M25 which is only three miles away. The area also has access to an array of national trust woodlands, parks and recreation grounds.

The accommodation comprises hallway lounge, dining room, fitted kitchen and conservatory over looking the garden. To the first floor are three well-proportioned bedrooms and the family bathroom.

To the rear of the property is a delightful garden which is mainly laid to lawn and benefits from a hot tub. To the front is off street parking and a garage.



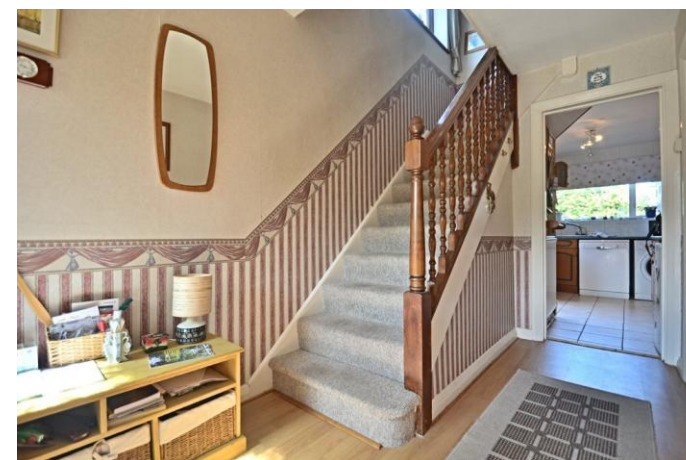
Internal viewing is essential to fully appreciate all that this three bedroom semi detached home has to offer.

EPC TO FOLLOW

Please refer to

www.jdmestateagents.com

to view our full area guides



Alma Road

APPROX. GROSS INTERNAL FLOOR AREA 1138.06 SQFT / 105.72 SQM. INC GARAGE



This is for guidance only, not to scale and must not be relied upon as a statement of fact.
Attention is drawn to the notice on these particulars.

