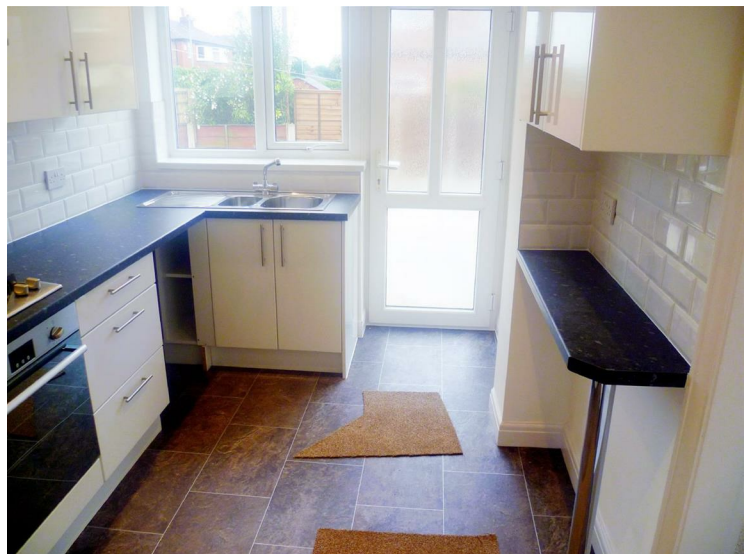


## Adamson Road, Manchester, M30 7EQ



**£695 Per month**

Adamson Road is a true family home with heaps of potential to offer any renter. Recently the property has undergone extensive refurbishment. There is so much to say and just not the space to say it...This is a spacious three bedroom semi detached house that sits proudly in a corner plot within a popular residential area. Located between Barton Road and Peel Green Road, with Motorway access not too far away you will find that this is an incredibly handy area to be in, nearby you have the choice of bus, tram and train routes. Eccles Town Centre is on hand for all of your daily necessities and you can soon find yourself in the mega entertainment giant that is the Trafford Centre. Inside the home you will find a traditional layout with an entrance hall to greet you, through to two reception rooms, a well sized refurbished modern kitchen, two double bedrooms, one single bedroom and a newly refurbished up to date bathroom. Surrounding the house you are shielded with shrubbery, to the front there is a small garden, an area along the side and pleasingly sized rear garden, along with off road parking which is roomy enough for two cars. This home is presented in an excellent manner and is fabulous rental opportunity. AVAILABLE NOW! \*FEES APPLICABLE PLEASE CONTACT THE OFFICE\*

**Reception Room 1**

**13' 1 x 9'9 (3.96m x 2.97m)**

**Reception Room 2**

**10'4 x 9'6 (3.15m x 2.90m)**

**Kitchen**

**11'4 x 7'7 (3.45m x 2.31m)**

**Bathroom**

**7'8 x 6'1 (2.34m x 1.85m)**

**Bedroom 1**

**12'1 x 9'9 (3.68m x 2.97m)**

**Bedroom 2**

**10'9 x 7'9 (3.28m x 2.36m)**

**Bedroom 3**

**7'8 x 7'7 (2.34m x 2.31m)**



