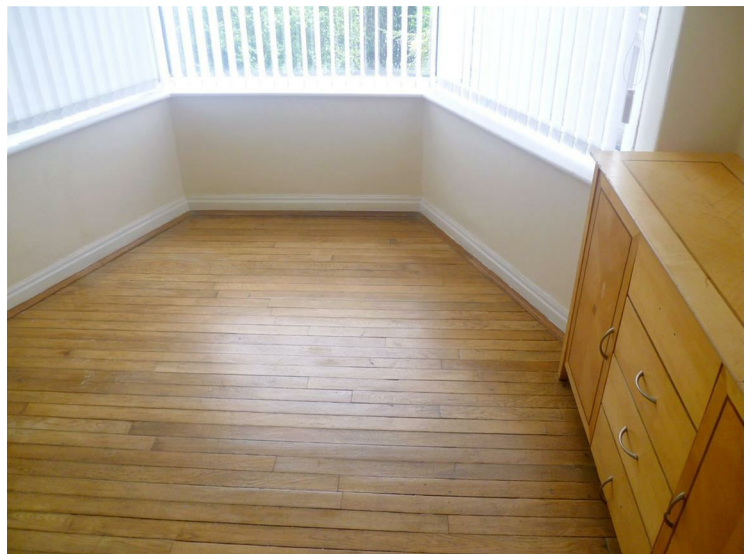


Langworthy Road, Salford, M6 7AG



£700 Per calendar month

This is definitely worthy of your time, a must see in fact! Langworthy Road is a commanding semi detached home with extensive mature gardens, a beautiful family home. As you enter you are greeted by a charming living room with characterful wood flooring, the further reception again has wood flooring and feels bright and airy, the kitchen is modern and of a generous size, an attractive area to whip up a culinary storm. Meandering your way upstairs you will find two double bedrooms both well sized with fitted wardrobes which always comes in handy for extra storage and a single bedroom and the bathroom is fully tiled with a white suite. As an extra a new boiler has been fitted along with new carpets to the upstairs. Outside you can't help but be pleased with the space on offer, the gardens are attractive and incredibly well maintained, they are usable and perfect for our long summer evenings. The property also boasts off road parking which is a huge plus to have. Langworthy Road is sat in a popular Salford 6 area with like homes, you are minutes away from Buile Hill Park and for daily conveniences you are near too a well know major supermarket. Within the area there are several bus routes that can take you into the city center and Salford Quays, along with the A576 and the M602 close at hand. This really is a fabulous home with a lot to offer! **AVAILABLE NOW! *FEES APPLICABLE PLEASE CONTACT THE OFFICE***

Bedrooms



Bathroom



External



Reception Rooms



Kitchen



