



Shirley CR0
£1,300 Per calendar month

Description:



Directions:

Tenure:

Council Tax Band:

Local Authority:



Room Dimensions:

Lounge	19' 11" x 11' 9"
Kitchen	10' 6" x 8' 5"
Bedroom 1	14' 5" x 8' 5"
Bedroom 2	11' 5" x 9'
New room	



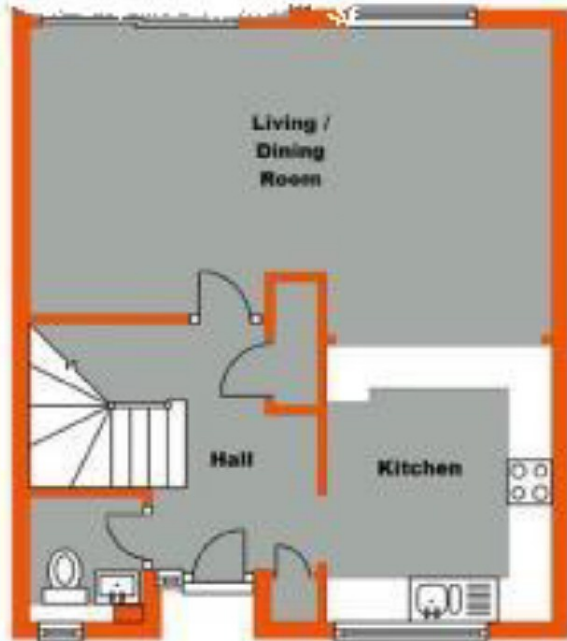
Please refer to www.jdmestateagents.com to see our full Area Guides.



Please contact the branch for a complete copy of the EPC document

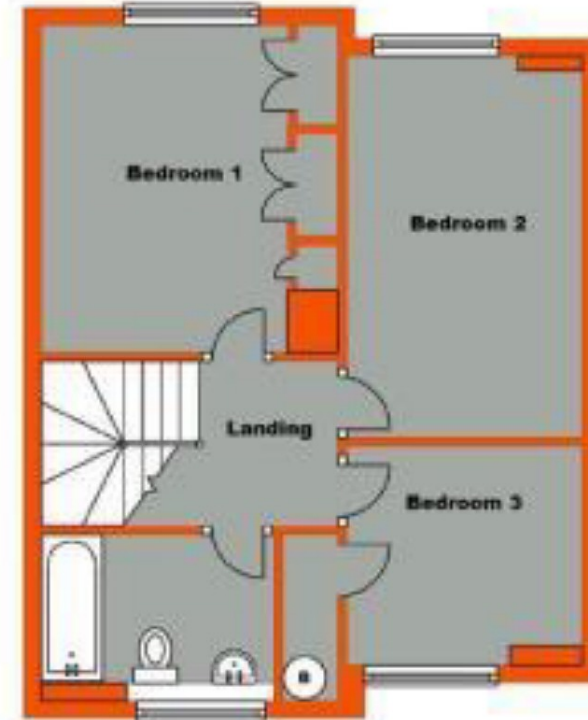
Ground Floor

Approx. 47.0 sq. metres (506.1 sq. feet)



First Floor

Approx. 45.6 sq. metres (493.7 sq. feet)



Total area: approx. 92.6 sq. metres (996.8 sq. feet)

Whilst every attempt has been made to ensure the accuracy of the floor plan contained here, measurements of doors, windows and rooms are approximate and no responsibility is taken for any error omission or mis-statement. These plans are for representation purposes only and should be used as such by any prospective purchaser / tenant. The services, systems and appliances listed in this specification have not been tested and no guarantee as to their operating ability or their efficiency can be given.

Plan produced using PlanUp.

IMPORTANT NOTICE

jdm must advise that although every effort has been made to ensure the accuracy of these details they form no part of any contract and are issued without any responsibility on the part of the agents or vendor. Photographs may have been taken using a wide angle lens. Any floor plans shown are not to scale. All measurements, walls, doors, windows, fittings and appliances, their sizes and locations are shown conventionally and are approximate only. Any reference to alterations or particular use of the property wherever stated, is not a statement that planning, building regulations or other relevant consent has been obtained. We have not carried out a survey of the property nor have we tested any services, systems or appliances at this property. We strongly recommend that all the information we provide is verified by yourselves on inspection and by your Surveyor and Solicitor or Legal Adviser.

jdm recommends Independent Mortgage Advice. For help with your mortgage please contact your local branch. Your home may be repossessed if you do not keep up repayments on your mortgage. Written quotations available on request.

jdm Lettings

36 Station Square, Petts Wood, Kent BR5 1NA

☎ 01689 838 040 ✉ lettingspettswood@jdmonline.com



jdm
LETTINGS