

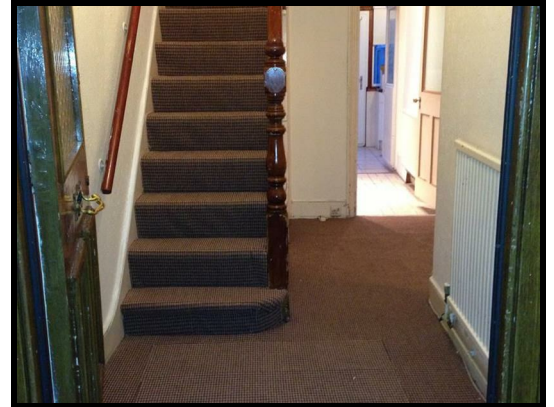
ANISTENHOMES

SALES • LETTINGS • MANAGEMENT • MORTGAGE • INSURANCE • FINANCE

TO LET

£1,795 PCM

Betchworth Road, Ilford, Essex IG3 9JH



To Let - £1795pcm

Betchworth Road, Ilford, Essex IG3 9JH

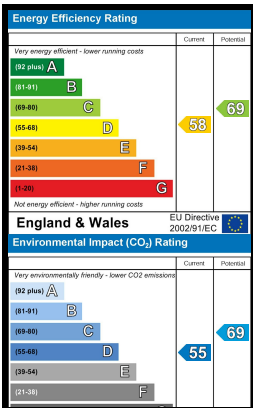
Spacious 3 Bed mid terrace house with 2 receptions
The property benefits from a first floor bathroom & ground floor shower facility
Walking distance to Seven Kings station
Company/corporate let or working professionals &
DSS tenants with guarantor accepted £1795pcm.
Available from 22nd December 2015!!! (Appointments only)

Surrounding Areas: Ilford, Seven Kings, Goodmayes, Chadwell Heath, Romford, Redbridge, Gants Hill, Newbury Park, Clayhall, Barkingside, Hainault, London, Essex

References applicable
6-8 Weeks deposit required
One month advance
Agency Fee applicable

Energy Efficiency Rating 58
Environmental Impact (Co2) Rating 55

- 1st Floor Bathroom
- Ground floor Shower



369 Green Lane, Seven Kings, Essex IG3 9TQ

T: 020 8599 0061 • M: 07944 100 100 • F: 020 8599 2441 • E: info@anistenhomes.co.uk

www.anistenhomes.co.uk

Anistenhomes is a trading name of Maya Residential London Limited on behalf of itself as agents for the vendors/lessor of this property upon whose instructions these particulars are specifically drafted give notice that: (i) These property particulars are produced in good faith and do not constitute or form part of any contract. (ii) No employee of Anistenhomes has any authority to make or give any representation or warranty in relation to this property. (iii) All measurements are approximate and believed to be accurate with in 6in/150mm. Any appliances or services mentioned in these particulars has not been tested.

Registered Office: 369 Green lane, Seven Kings, Essex IG3 9TQ • Registered in England No: 08355088 • Vat Reg No: 162 7213 25