

Cholmondeley Road, Salford, M6 8PR



£650 Per calendar month

Location, location, location...Cholmondeley Road is set in the sought after area of Salford 6, surrounded by similar large homes and leafy roads this truly is a desirable local area. Close by you have a number of outdoor fields which are ideal for an evening meander or some open air fun and games. Transport from here should be quite straightforward, there are bus routes running right by along with the M602 or the A580 that can take you directly into Manchester City Centre and other surrounding areas. With local schools close at hand and daily amenities too this is a super handy place to be. Cholmondeley Road is striking from the off and has bags of space throughout, it is a bay fronted mid terraced with three bedrooms. As you enter you are greeted by two reception rooms both a pleasing size with french doors leading to outside off the 2nd reception room, the kitchen may be a little compact but is perfectly usable. Upstairs you two double bedrooms both of a nice size and a modern tiled bathroom. Outside you have a medium sized rear garden and with the summer here any outside space is a massive bonus. Lets all look fondly at Cholmondeley! AVAILABLE MID JULY! *FEES APPLICABLE PLEASE CONTACT THE OFFICE*

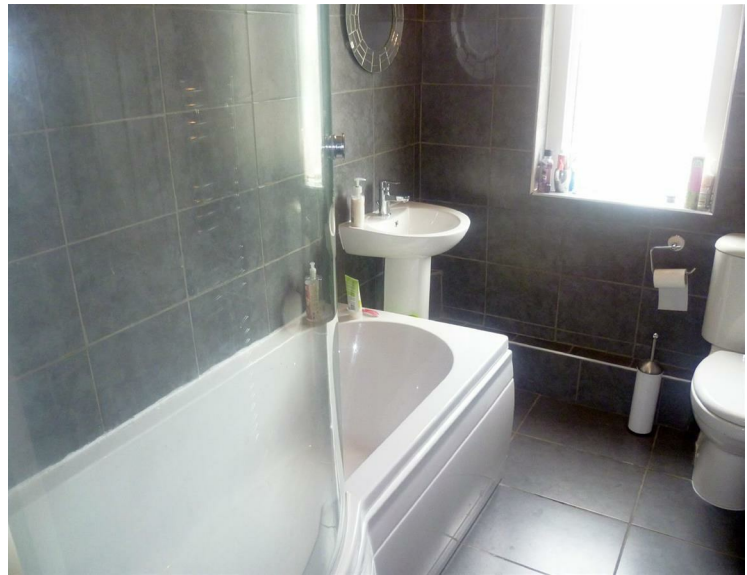
Kitchen



Bedrooms



Bathroom



External



Reception Room



