

New Cross Street, Salford, M5 5EU



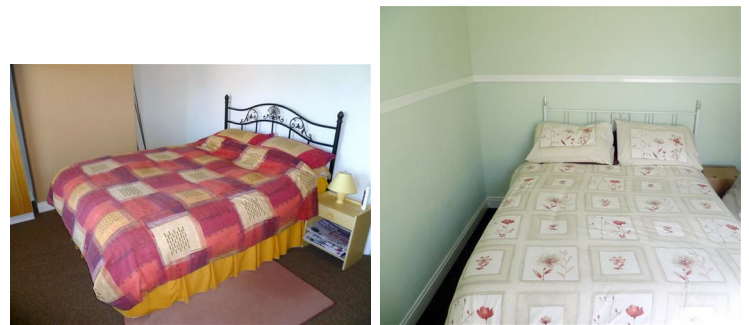
£650 Per calendar month

If you've made a list, you wont be crossing it off that's for sure. New Cross Street is a fabulous rental, it's solid and sturdy and nice family home. A pleasant traditional style terraced home set within the core of Salford 5. The home offers you a pleasant living space throughout with a living / dining room, a fitted kitchen, a utility room, three bedrooms (yes three, two of which are doubles and one single), a bathroom and a enclosed yard to the rear, this is a rather spacious property with a lot going for it. There is the added bonus of a communal area that is shared with the other residents at the back of the house, what a great way to get to know your neighbours and you all benefit from having some generous outdoor space. Location wise your in good company, Buile Hill Park is near by along with Salford Royal Hospital and you have good transport links into Manchester City Centre from here, along with metro links into Salford Quays from Eccles New Road. The M602 is also moments away. If you are looking for a handy, roomy property at reasonable price then this might just be the one for you. **AVAILABLE NOW! *FEES APPLICABLE PLEASE CONTACT THE OFFICE***

Living / Dining



Bedrooms



External



Bathroom



Kitchen



