



Asking Price Of £245,000 Leasehold

For Sale

Rental Yield: 6.34%

South End, Croydon



[www.martincolondon.com](http://www.martincolondon.com)

**MARTIN&CO**

0208 688 8565

[croydon@martinco.com](mailto:croydon@martinco.com)

145 Brighton Road, South Croydon, Surrey, CR2 6EF

Accuracy: Whilst we endeavour to make our sales details accurate and reliable, if there is any point which is of particular importance to you, please contact the office and we will be pleased to check the information. Do so, particularly if contemplating travelling some distance to view the property. Sonic / laser Tape: All measurements have been taken using a sonic / laser tape measure and therefore, may be subject to a small margin of error. Services Not tested: The mention of any appliances and/or services within these Sales Particulars does not imply they are in full and efficient working order. All Measurements: All Measurements are Approximate: Mortgage & Financial Advice: The Martin & Co mortgage service is provided by London & Country Mortgages the UK's largest Independent Fee-Free mortgage broker of Beazer House, Lower Bristol Road, Bath, BA2 3BA. Authorised and regulated by the Financial Conduct Authority. Their FCA number is 143002. YOUR HOME IS AT RISK IF YOU DO NOT KEEP UP REPAYMENTS ON A MORTGAGE OR OTHER LOANS SECURED ON IT. Full written quotation available on request. A suitable life policy may be required. Loans subject to status. Minimum age 18.

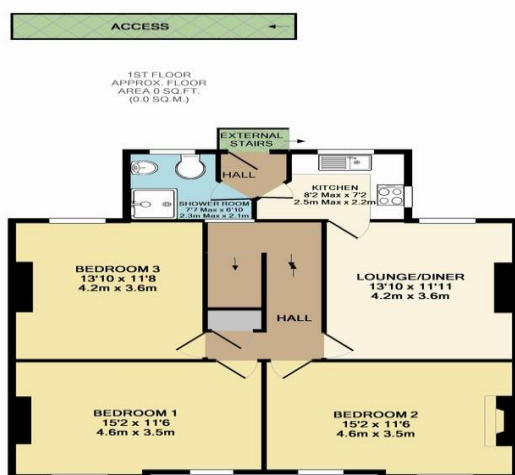
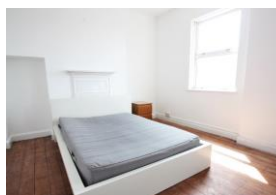
Asking Price Of **£245,000** Leasehold

3 Bedroom Apartment

XX CASH BUYERS ONLY PLEASE XX

Call now to view this absolutely huge 3 DOUBLE BEDROOM second floor flat ABOVE POPULAR RESTUARANTS, right in the heart of Croydon. Numerous local shops, bars and restaurants on your doorstep, you will be spoilt for choice! Tall ceilings, modern kitchen, shower room. IDEAL BUY TO LET with NO CHAIN.

- 3 HUGE DOUBLE BEDROOMS
- DOUBLE FRONTED APARTMENT
- ACCESS TO THE REAR
- CENTRAL LOCATION
- TALL CEILINGS
- SPACIOUS LIVING ROOM
- CASH BUYERS ONLY
- NO CHAIN



[www.martincolondon.com](http://www.martincolondon.com)

**MARTIN&CO**

0208 688 8565

[croydon@martinco.com](mailto:croydon@martinco.com)

145 Brighton Road, South Croydon, Surrey, CR2 6EF

Accuracy: Whilst we endeavour to make our sales details accurate and reliable, if there is any point which is of particular importance to you, please contact the office and we will be pleased to check the information. Do so, particularly if contemplating travelling some distance to view the property. Sonic / Laser Tape: All measurements have been taken using a sonic / laser tape measure and therefore, may be subject to a small margin of error. Services Not tested: The mention of any appliances and/or services within these Sales Particulars does not imply they are in full and efficient working order. All Measurements: All Measurements are Approximate: Mortgage & Financial Advice: The Martin & Co mortgage service is provided by London & Country Mortgages the UK's largest Independent Fee-Free mortgage broker of Beazer House, Lower Bristol Road, Bath, BA2 3BA. Authorised and regulated by the Financial Conduct Authority. Their FCA number is 143002. YOUR HOME IS AT RISK IF YOU DO NOT KEEP UP REPAYMENTS ON A MORTGAGE OR OTHER LOANS SECURED ON IT. Full written quotation available on request. A suitable life policy may be required. Loans subject to status. Minimum age 18.