

3 Bridge Street
Bishop's Stortford
Herts CM23 2JU

LEDNOR
& COMPANY

(01279) 505055
sales@lednor.co.uk
www.lednor.co.uk

Established 1986

Independent Estate Agents and Valuers



**23 Gibbs Field, Thorley Park, Bishop's Stortford, Hertfordshire, CM23
4EY
£369,995**

A well maintained three bedroom detached house which stands on a larger than average plot.

The accommodation has the benefit of gas central heating and double glazing. It comprises: Entrance hall, downstairs cloakroom, refitted kitchen/breakfast room, living room with attractive fireplace, conservatory, three well proportioned bedrooms and a bathroom.

The rear garden is just under 45' in length and has a range of outbuildings which includes three sheds and a detached summer house. The garden has been designed for easy maintenance and has several decked areas and an artificial lawn. The front garden is approximately 35' in length and there is driveway parking for at least three cars plus an additional gravel hardstanding area.

The property is located in a popular road which is within walking distance of two well regarded primary schools and the Thorley Park Neighbourhood Centre which features: Sainsburys supermarket, a newsagents/post office, various useful shops, cafe, restaurant, fish and chip shop as well as Busy Bees Nursery, doctors and dentists surgeries. The town centre and mainline station are about a mile away. EPC Band E.

Front Door to

Entrance Hall

Radiator in ornate enclosure. Telephone point. Understairs storage cupboard. Stairs to the first floor. Laminated flooring. Doors to kitchen/breakfast room, living room and

Downstairs Cloakroom

Corner wash basin with tiled splashback. Low level WC. Double glazed window. Radiator.

Kitchen/Breakfast Room

16' x 7'10" (4.88m x 2.39m)

Well fitted with a range of modern wood faced units and granite effect work surfaces.

Stainless steel circular sink unit with mixer tap and adjacent circular drainer with cupboards below. Adjacent and opposite work surfaces with cupboards and drawers below. Breakfast bar. Eight single eye level wall cupboards. Radiator. Chimney style extractor hood. Space for range style cooker. Plumbing for dishwasher and washing machine. Full-height larder cupboard. Ceramic tiled splashbacks. Space for upright fridge/freezer. Double glazed windows to front and side.



Living Room

15'11" x 9'5" (4.85m x 2.87m)

Laminated flooring. TV point. Radiator. Fireplace with log effect fire. Double glazed window and sliding patio doors to



Conservatory

13'9" x 8'6" (4.19m x 2.59m)

Double glazed windows on three aspects including sliding patio doors to the rear garden. Polycarbonate roof. Light and power connected.

N.B. We have been advised by the present owners that the conservatory requires repair or upgrading.



First Floor Landing

Hatch to loft space. Built-in airing cupboard housing pre-lagged hot water cylinder.

Bedroom One

16' x 7'9" (4.88m x 2.36m)

Two double glazed windows. Radiator. TV point.



Bedroom Two

10'10" x 7'2" (3.30m x 2.18m)

Double glazed window. Radiator. Laminated flooring.



Bedroom Three

10'9" max x 8'7" (3.28m max x 2.62m)

Double glazed window. Radiator. Laminated flooring.



Bathroom

6'9" x 6'5" (2.06m x 1.96m)

Half tiled walls with full-height splashbacks. Pedestal wash basin. Low level WC. Panel bath with mixer tap, shower attachment, shower rail and curtain. Double glazed window. Radiator.



Rear Garden

A good sized rear garden which extends to 45' at the maximum point.

Enclosed by 6' fencing on all three aspects. Outside light. 'L' shaped decked patio area. Artificial lawn area. Door to garage. Side access has been filled in with a dual access wooden garden shed. Two further garden sheds, one of which has power connected.



Detached Summer House

10'8" x 7'8" (3.25m x 2.34m)

Light and power connected.



Rear View of House



Front Garden

Approximately 35' in length. Enclosed by 6' fencing and established hedges.

Large raised flower bed with numerous shrubs. Outside light and tap.

Long driveway provides off-street parking for at least three cars. There is an additional gravel hardstanding area to the side of the driveway.

Single Garage

Up and over door. Light and power connected. Door to the rear garden.

FINANCIAL SERVICES

Through our mortgage broker Mark Jackson of M.D.Jackson Financial Services, we are able to offer independent mortgage advice with no obligation. Mark is also independent for all protection needs allowing him to review your life assurance and critical illness policies so that he can ensure that you have the most suitable cover. He can be contacted on 01799 542699. Please feel free to call him for any advice or quotations required. Your home is at risk if you do not keep up payments on a mortgage or loan secured against it. M.D.Jackson Financial Services are directly authorised by the Financial Conduct Authority no. 300773

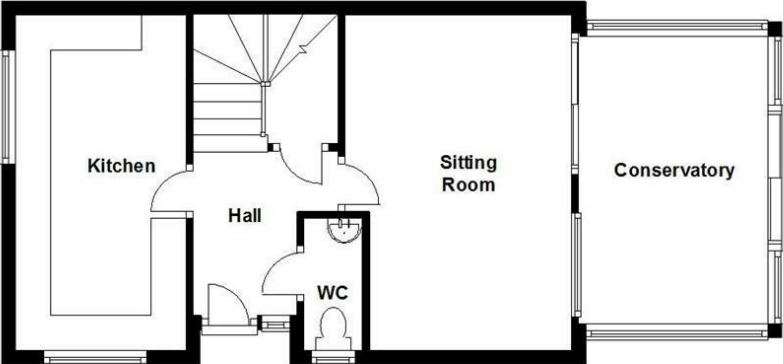
RELOCATION AGENT NETWORK

WHY YOU SHOULD CHOOSE A RELOCATION AGENT NETWORK MEMBER * Independently selected as the best local agents. * Now affiliated to over 600 offices across the UK. * Local reputation, experience and commitment. * Independent owner managed business. * More out of town buyers through links with Cartus who are the premier provider of global relocation services. * Access to the largest property website of its kind in the UK - www.relocation-agent-network.co.uk. * Not owned by a financial institution. * Regularly 'mystery shopped' to ensure high standards. * Committed to meeting your needs this year, next year and for many more to come.

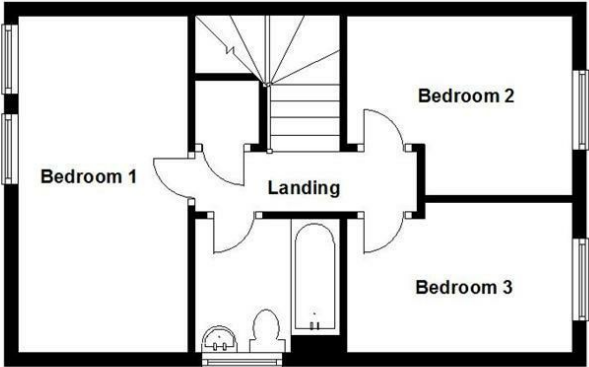
Disclaimer

For clarification, we wish to inform prospective purchasers that we have prepared these sales particulars as a general guide. We have not carried out survey, not tested the services, appliances or specific fittings and any mention of such items does not imply that they are in working order. Room sizes are approximate and should not be relied upon for carpets and furnishings. Photographs are for illustration only and may depict items which are not for sale or included in the sale of the property. Any stated plot size is intended merely as a guide and has not been officially measured or verified. We have not checked the legal documents to verify the freehold/leasehold status of the property and purchaser is advised to obtain clarification from their solicitor or surveyor. MONEY LAUNDERING REGULATIONS 2003. Intending purchaser will be asked to produce identification documents and we would ask for your co-operation in order that there be no delay in agreeing the sale.

Ground Floor



First Floor



APPROX GROSS INTERNAL FLOOR AREA 950 SQFTT
This floor plan is intended as a **GUIDE TO LAYOUT** and is **NOT TO SCALE**