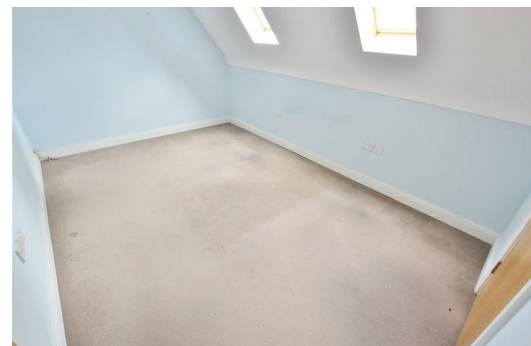




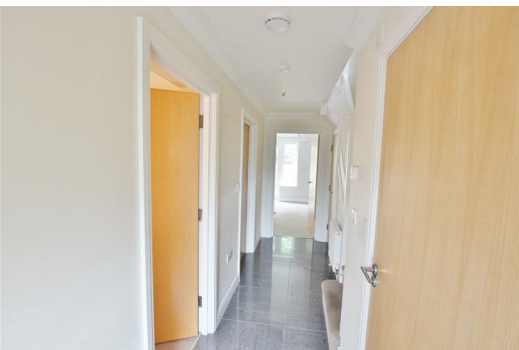
5 Northbourne Mews, Bournemouth, BH10 7AD

£289,950

VACANT POSSESSION - ABLE TO MOVE QUICKLY - Built approximately seven years ago this detached house has a large lounge/dinner looking onto the rear garden, a modern kitchen with fitted appliances and a ground floor WC.



The Property is superbly located in the quiet secluded gated residence of Northbourne Mews, Northbourne, BH10. Being one of only 8 properties in the development it is an excellent location for primary and secondary schools and local, national and international communication links, with Bournemouth station close by and easy access to motorways and the Wessex way. It is also only a short drive from an abundance of local shops and amenities via, castle point shopping centre, Moordown or even town centre.



Energy Efficiency Rating		Environmental Impact (CO ₂) Rating	
Band	Score	Band	Score
A	92-100	A	1-10
B	81-91	B	11-20
C	69-80	C	21-30
D	55-68	D	31-40
E	39-54	E	41-50
F	21-38	F	51-60
G	1-20	G	61-70