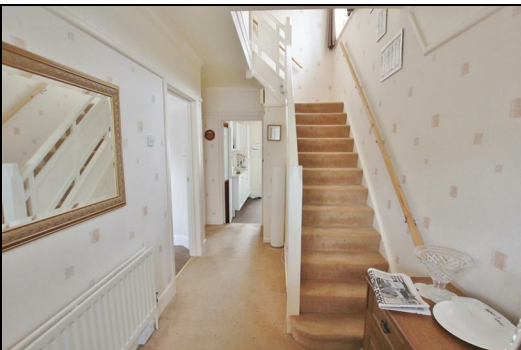




53 Priory View Road, Bournemouth, Dorset, BH9 3JH
£340,000



OPEN HOUSE SATURDAY 23 OF JULY

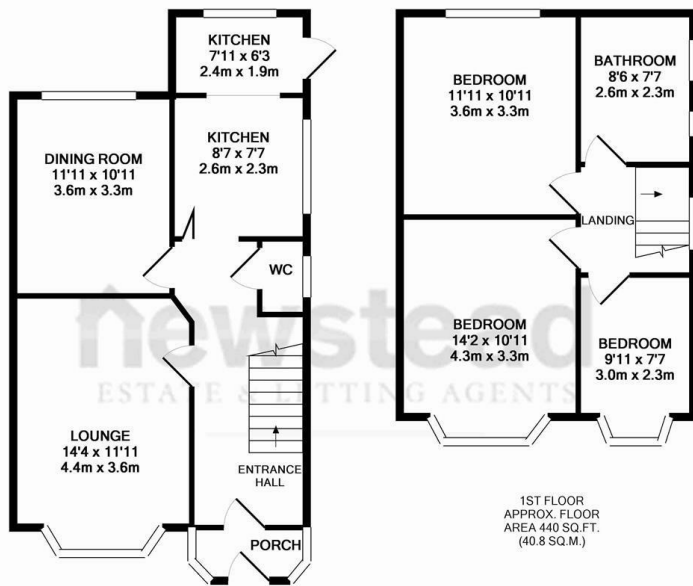
VIEWING IS STRICTLY BY APPOINTMENT ONLY, PLEASE CALL TO REGISTER YOUR DETAILS AND BOOK YOUR TIME SLOT

An opportunity to acquire a sizable detached three double bedroom detached family home located in the sought after Priory View Road, BH9 location.

The property offers spacious accommodation over two floors, on entry you are greeted with a large open reception hall which provides access to the first large reception room with a feature bay window, then onto the second substantial reception room. To complete the downstairs accommodation you have a sizable kitchen/breakfast with a door leading to your garden.

To the rear of the property you have a good sized rear garden which is mainly made up of lawn and patio. Located also in the rear garden is your garage with an up and over door this gives the property great options for storage. To the front of the property you have off road parking for numerous vehicles.

The Property is located in the sought after BH9, Moordown area superbly located for families with an abundance of primary and secondary schools, within walking distance of Winton/Moordown high street and its plethora of local shops, supermarkets, amenities and bus routes along with local and national transport links in and out of Bournemouth via the Wessex way. Also a short drive from castlepoint shopping centre and nearby redhill common/park.



Whilst every attempt has been made to ensure the accuracy of the floor plan contained here, measurements of doors, windows, rooms and any other items are approximate and no responsibility is taken for any error, omission, or mis-statement. This plan is for illustrative purposes only and should be used as such by any prospective purchaser. The services, systems and appliances shown have not been tested and no guarantee as to their operability or efficiency can be given
Made with Metropix ©2016

You may download, store and use the material for your own personal use and research. You may not republish, retransmit, redistribute or otherwise make the material available to any party or make the same available on any website, online service or bulletin board of your own or of any other party or make the same available in hard copy or in any other media without the website owner's express prior wr



Newstead Estate & Lettings Agents Ltd
122-124 Castle Lane West, Bournemouth, Dorset, BH9 3JU
Tel: 01202 430 108
Email: info@newsteadproperty.co.uk
www.newsteadproperty.co.uk

newstead
ESTATE & LETTING AGENTS