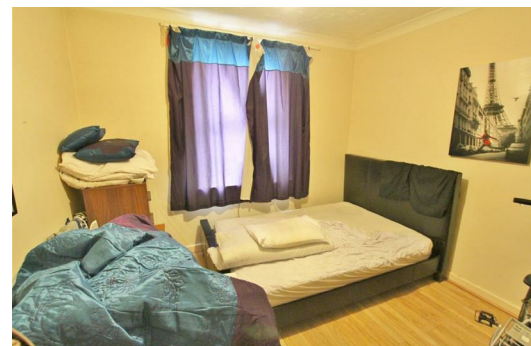
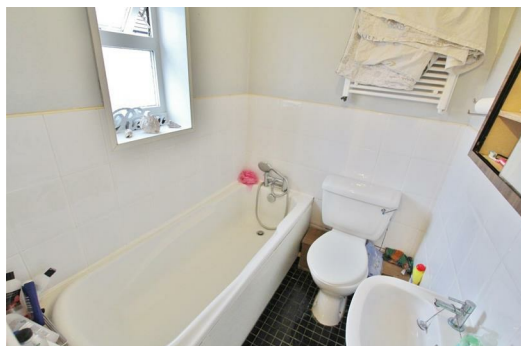




**12 Shelley Road, Boscombe, Bournemouth, Dorset, BH1 4HY**

**£995 Per Month**

SHARERS WELCOME - This three double bedroom house would make an ideal family rental or could be a great option for three people wishing to share.



The accommodation consists of a large open plan living room/kitchen at the rear, which comes with appliances included. There is a ground floor double bedroom at the front also.

Upstairs has a very large bedroom at the front and a further double bedroom at the rear, which has its own sink. The bathroom is also on the first floor and comes with a bath + shower attachment, WC and basin.

Outside there is a courtyard style garden at the rear and parking for two cars (or 3 small ones) on the front.

Unfurnished

Pets considered

Sharers welcome

Available 1st December 2015

Council Tax Band B



Energy Efficiency Rating		Environmental Impact (CO <sub>2</sub> ) Rating	
Band	Score	Band	Score
A	92-100	A	1-10
B	81-91	B	11-20
C	69-80	C	21-30
D	55-68	D	31-40
E	39-54	E	41-50
F	21-38	F	51-60
G	1-20	G	61-70