



Brighton, East Sussex BN1 7JA

£299,950



Hollingbury Road

Brighton, East Sussex

OPEN HOUSE Saturday 27th June.

A stunning two/three bedroom maisonette located in highly sought after location just off Ditchling Road in the popular Fiveways district.

The property briefly boasts a private entrance leading into a welcoming entrance hall, spacious separate lounge with bay fronted window and working original feature fire place, second separate reception room for use as third bedroom or dining room/study or office, downstairs cloakroom and two rear a modern fitted kitchen.

Ascending two the second floor you can find a generous landing with access to two double bedrooms to front and rear both having fitted single wardrobes plus a luxury fitted bathroom also can be found, loft access.

Set in Hollingbury Road in the highly regarded Fiveways district where there is a wealth of activity in including cafés, bars and restaurant and a wide range of local shopping facilities and fantastic local schools.

Commuting is made easy as superb bus services are close by and those that need to travel to London then London Road Train Station is 0.5 miles away taking roughly nine minutes.

Internal viewing comes highly recommended to fully appreciate this wonderful home, to arrange please call Shore Estates on 01273 830555

- Open House 27th June
- Three Bedrooms
- Seperate Lounge
- Cloakroom
- Modern Fitted Kitchen
- Private Entrance
- Luxury Bathroom Suite
- Highly Regarded Location



Private Front Entrance

Entrance Hall

Separate Lounge

Second Reception Room

Cloakroom

Modern Fitted Kitchen

First Floor Landing

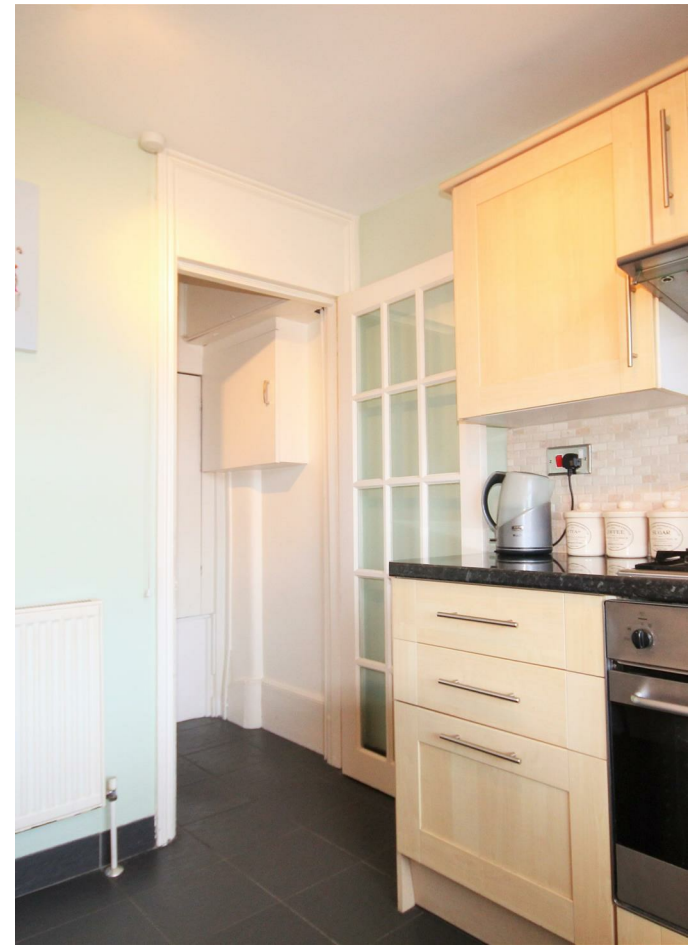
Bedroom One

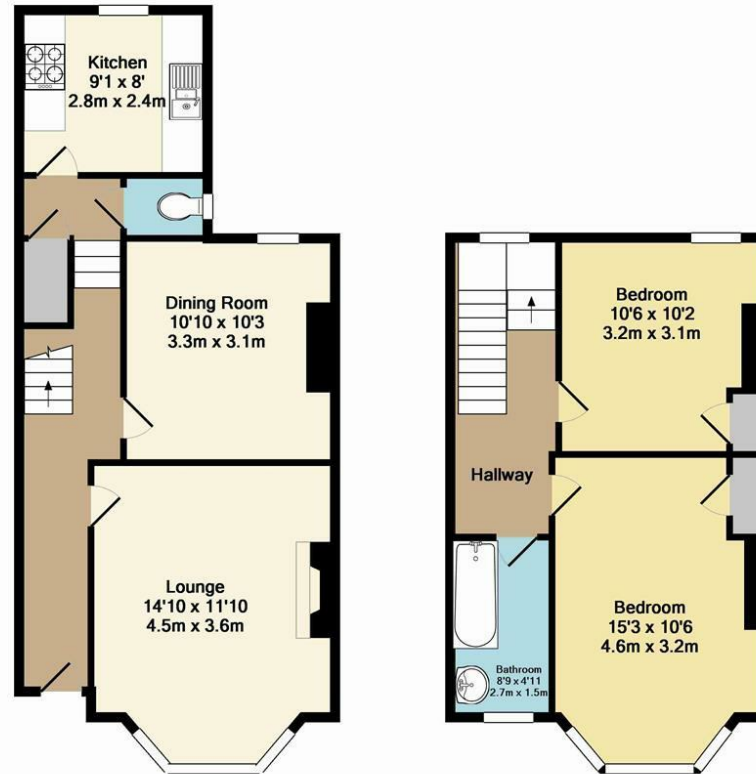
Bedroom Two

Luxury Fitted Bathroom

Boarded Loft

SHARE OF FREEHOLD





Ground Floor
Approx. Floor
Area 461 Sq.Ft.
(42.9 Sq.M.)

1st Floor
Approx. Floor
Area 364 Sq.Ft.
(33.8 Sq.M.)

Total Approx. Floor Area 825 Sq.Ft. (76.6 Sq.M.)

Whilst every attempt has been made to ensure the accuracy of the floor plan contained here, measurements of doors, windows, rooms and any other items are approximate and no responsibility is taken for any error, omission, or mis-statement. This plan is for illustrative purposes only and should be used as such by any prospective purchaser. The services, systems and appliances shown have not been tested and no guarantee as to their operability or efficiency can be given

Made with Metropix ©2015