



HANS PLACE, KNIGHTSBRIDGE SW1

Price
£2,500 per week

Unusually secure, raised ground floor, 3 bedroom duplex flat with it's own street entrance, comprising 2296 sq ft . The property is decorated and presented to a high standard in a contemporary style, featuring comfort cooling, wood floor, and extensive storage. there is also underground parking and access to the communal garden by separate negotiation. Offered unfurnished. This quiet garden square is moments from Harrods and within very easy walking distance of Sloane Square.

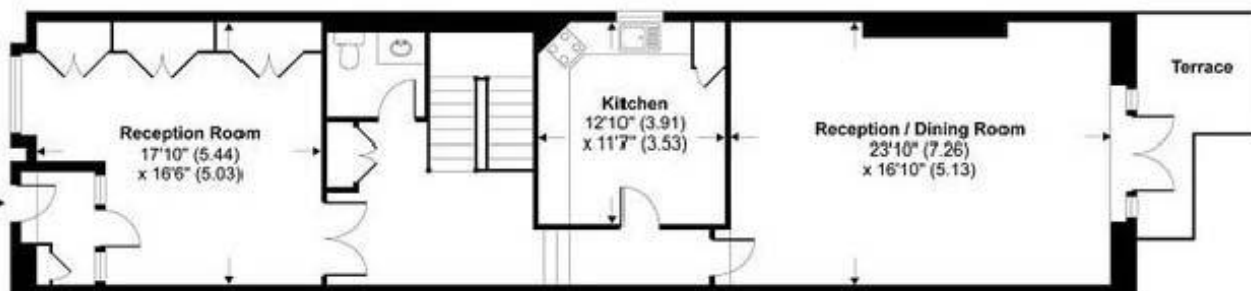
Details

- 3 Bedrooms
- 3 Bathrooms
- 2 Reception Rooms
- Kitchen/Breakfast Room
- Utility Room
- Balcony
- Communal Gardens
- wood floors
- Council Tax Band H





LOWER GROUND FLOOR



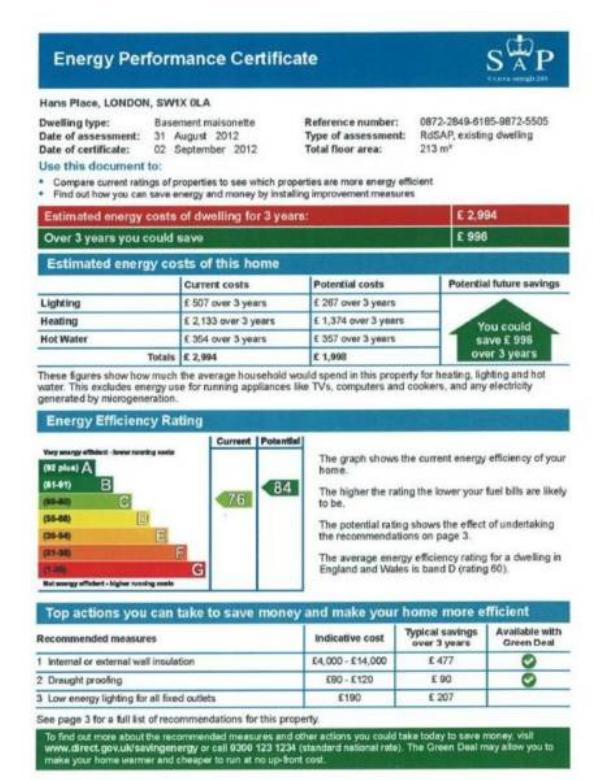
GROUND FLOOR

TOTAL GROSS INTERNAL FLOOR AREA 2296 SQFT / 213.2 SQM

Terms and Conditions

Available: Available Now For Long Let
Price: £2,500 per week

EPC Information



SUBJECT TO CONTRACT

VIEWING STRICTLY BY APPOINTMENT