

GREEN STREET, MAYFAIR W1

Price
£2,500 per week

A light and spacious refurbished three bedroom apartment in Mayfair. The property is situated in a beautiful redbrick conversion, benefiting from high ceilings, period features and neutral decor, comprising of 3 bedrooms, 3 bathrooms, reception room, open plan kitchen/dining area, guest cloakroom, utility room, direct lift access and air conditioning.

Green Street is one of Mayfair's favoured residential streets offering ease of access to Hyde Park, Selfridges and Bond Street.

Details

- 3 Bedrooms
- 3 Bathrooms
- Reception Room
- Kitchen
- Lift

Green Street, W1K

Approximate Gross Internal Area
(Excluding Lift)

170.89 sq m / 1839 sq ft

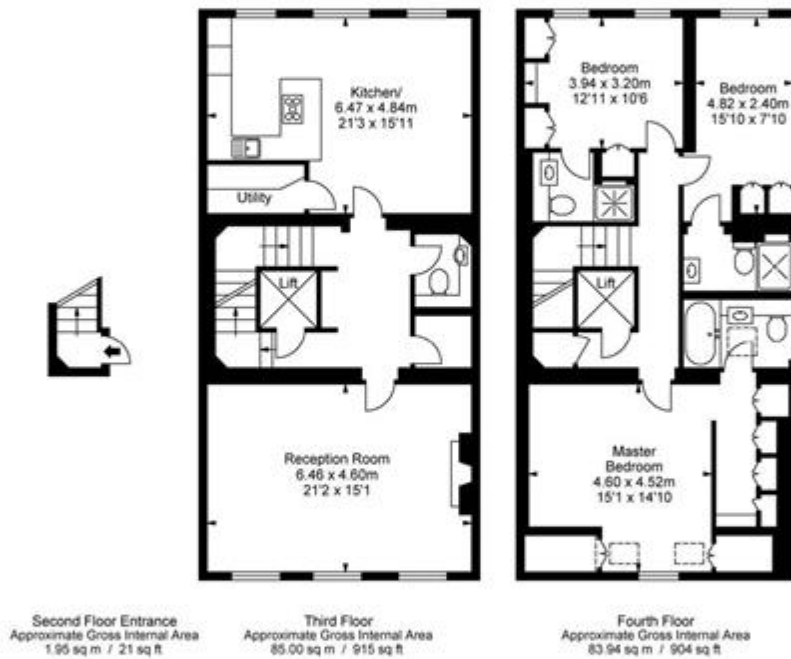



ILLUSTRATION FOR IDENTIFICATION PURPOSES ONLY

ALL MEASUREMENTS ARE MAXIMUM AND INCLUDE WINDOW BAYS AND WARDROBES WHERE APPLICABLE
THIS PLAN MUST NOT BE REPRODUCED BY ANY OTHER PERSON WITHOUT PERMISSION

Terms and Conditions

Available: Available 18/09/2015 For Long Let
Price: £2,500 per week

EPC Information

Energy Performance Certificate 

Flat 3, 29 Green Street, LONDON, W1K 7AZ


Dwelling type: Top-floor flat Reference number: 8614-7438-2180-0623-4906
 Date of assessment: 07 August 2014 Type of assessment: SAP, new dwelling
 Date of certificate: 07 August 2014 Total floor area: 164 m²

Use this document to:

- Compare current ratings of properties to see which properties are more energy efficient
- Find out how you can save energy and money by installing improvement measures

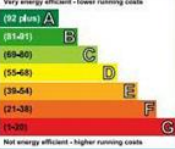
Estimated energy costs of dwelling for 3 years:	£ 2,598
Over 3 years you could save	£ 108

Estimated energy costs of this home

	Current costs	Potential costs	Potential future savings
Lighting	£ 384 over 3 years	£ 258 over 3 years	
Heating	£ 1,854 over 3 years	£ 1,872 over 3 years	
Hot Water	£ 360 over 3 years	£ 360 over 3 years	
Totals	£ 2,598	£ 2,490	

These figures show how much the average household would spend in this property for heating, lighting and hot water. This excludes energy use for running appliances like TVs, computers and cookers, and any electricity generated by microgeneration.

Energy Efficiency Rating



Very energy efficient - lower running costs

Not energy efficient - higher running costs

Current	Potential
75	75

The graph shows the current energy efficiency of your home.

The higher the rating the lower your fuel bills are likely to be.

The potential rating shows the effect of undertaking the recommendations on page 3.

The average energy efficiency rating for a dwelling in England and Wales is band D (rating 60).

Actions you can take to save money and make your home more efficient

Recommended measures	Indicative cost	Typical savings over 3 years
1 Low energy lighting for all fixed outlets	£175	£ 108

SUBJECT TO CONTRACT

VIEWING STRICTLY BY APPOINTMENT